

ENDODONTICS

DENITAI  
**CATALOG**



## GLOBAL COMPETENCE FOR MORE THAN 50 YEARS

HYGENIC, PARAPOST and ROEKO are internationally renowned endodontic brands by COLTENE. Over the last years the portfolio of endo products from root canal shaping to obturation has been successfully enlarged and optimized, thus offering perfectly attuned equipment for both, endodontists and general practitioners.

By introducing the highly innovative HyFlex CM Niti-Files in 2010, COLTENE has set new benchmarks for breakage resistance and flexibility. The innovative material ensures perfect root canal adaptation with bending properties similar to stainless steel files. The controlled memory effect allows files to regain their original shape simply by autoclaving after the treatment. The new technology attracted intense scientific interest resulting in numerous publications on the excellent properties of HyFlex CM. The CanalPro family is complete with a cordless endodontic motor, the fully automated Apex Locator and a wide range of rinsing solutions. For safe handling, these solutions, as well as accessories such as irrigation syringes and filling station are clearly color coded.

Paper points by HYGENIC and ROEKO are produced fully automatically and are reliably absorbent, true to size and of highest quality. Efficient and safe obturation can be achieved either with GuttaFlow, a unique cold filling system, which combines gutta percha and sealer in one product, or with Guttapercha points by HYGENIC and ROEKO.

The ParaPost X system, a market leader in many markets for decades, offers the perfect post for every clinical situation. One range of drills serves all techniques and indications, from metal-free restorations with ParaPost Fiber Posts or classical metal posts for direct and labtechnique. And last but not least the multifunctional ParaCore serves for post cementing, core build-up and crown and bridge cementation, and thus perfectly rounds off the endodontic product range.

## Company

COLTENE is a global leader in the development, manufacture and sale of consumables and small-size equipment for dental treatment applications.

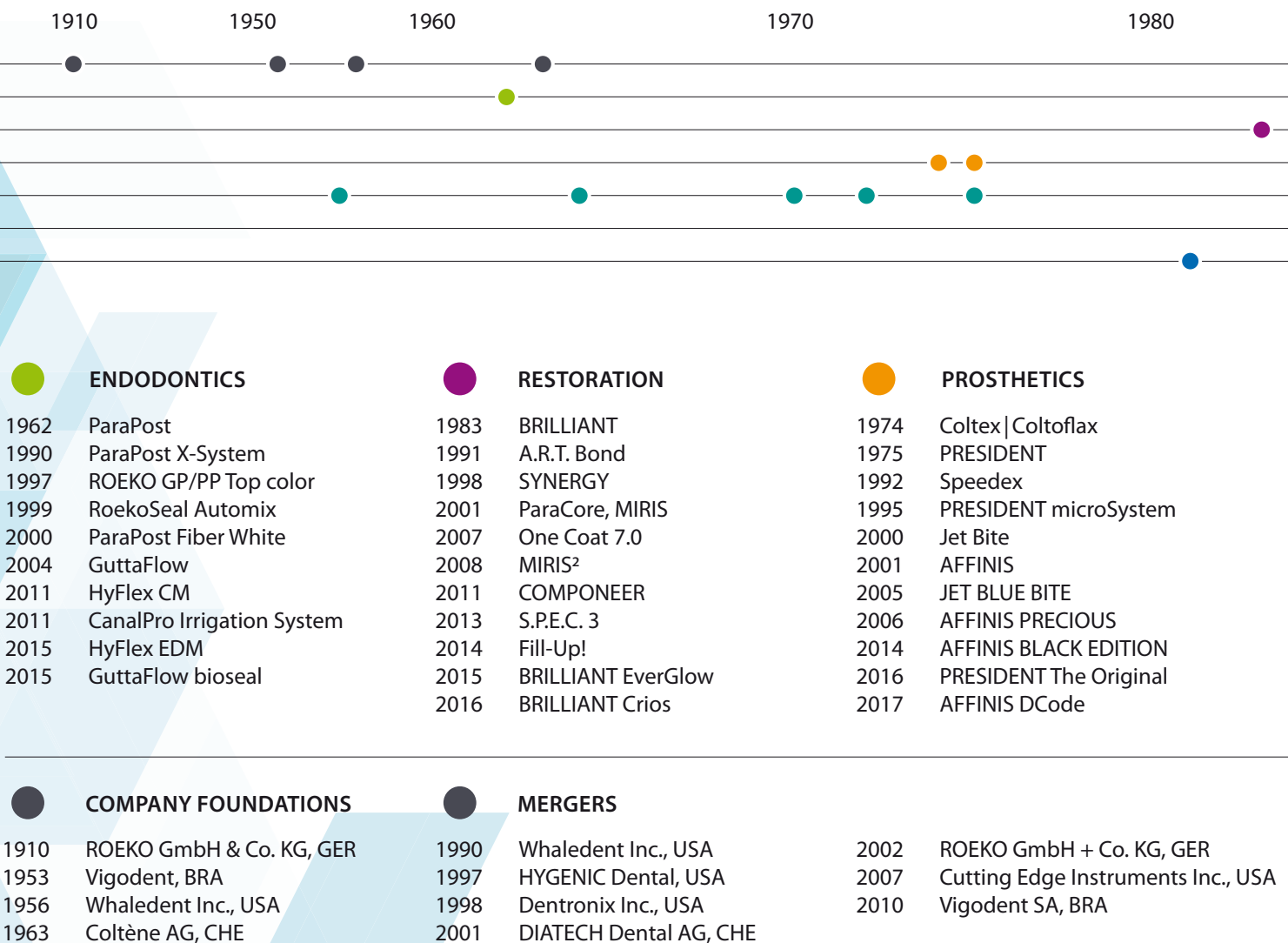
The Dental Group offers a wide range of products, encompassing six segments – solutions for almost all dental treatments. The complete endodontology programme includes root canal preparation with files and rinsing solutions, obturation and post systems. The next extensive range is centred entirely on restorative filling therapy. This particularly includes temporary and permanent filling materials, as well as adhesive systems and polymerisation lamps. Prosthetics represents a further main area. It includes a wide spectrum of condensation and addition cross-linking impression materials. The segments of treatment aids, infection control and rotating instruments round off the programme.

COLTENE has time and time again developed pioneering innovations for over 50 years, and Roeko for over a 100 years who offer the user first grade dental solutions.

Today the COLTENE Group operates production facilities in Switzerland, Germany, Brazil and the USA. It maintains a worldwide sales network with its own subsidiaries and distribution partners in over 120 countries. COLTENE therefore serves dentists, dental technicians, opinion leaders and universities with tailored quality products and services – worldwide.

[www.coltene.com](http://www.coltene.com)

## History





## Production facilities

**Switzerland:** Coltène/Whaledent AG, Headquarter in Altstätten. Development and production of chemical dental consumables and rotary instruments.

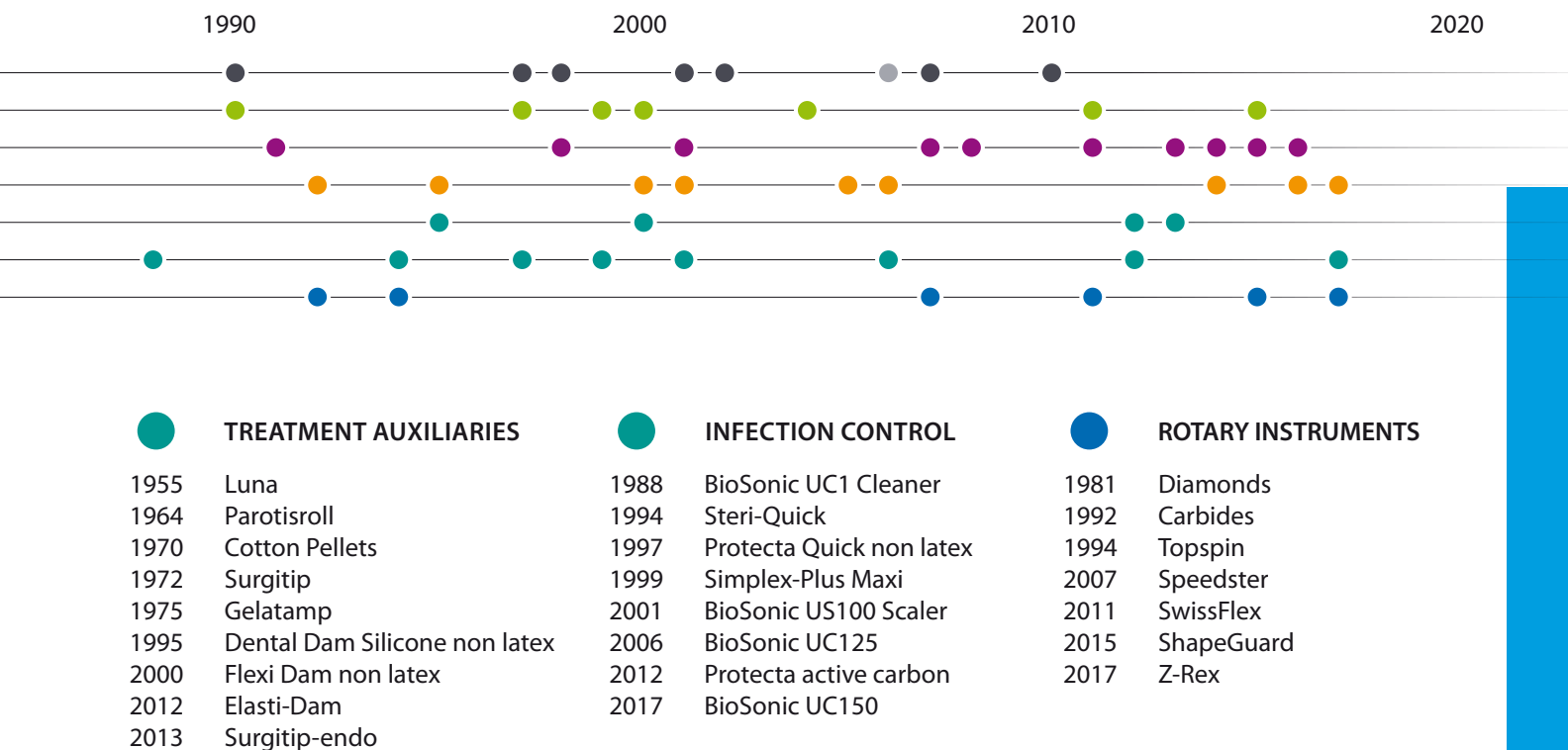
**Germany:** Coltène/Whaledent GmbH + Co. KG in Langenau. Development and production of treatment auxiliaries and endodontic products.

**USA:** Coltène/Whaledent Inc. in Cuyahoga Falls. Production of mechanical-technical dental products and orthodontics.

**Brazil:** Vigodent SA Indústria e Comércio in Rio de Janeiro. Production of chemical dental consumables.



COLTENE Headquarter, Altstätten / Switzerland



### INITIAL PUBLIC OFFERING

2006 IPO of COLTENE Holding AG at SIX Swiss Exchange, CHE



# Content

	CATEGORY	PRODUCT	BRAND	PAGE
Step 1	<b>Diagnosis</b>	Cold spray	ROEKO	8
Step 2	<b>Infection control</b>	Dental Dam Dental Dam Kits Dental Dam Accessories Dental Dam Clamps	ROEKO HYGENIC	11
Step 3	<b>Access</b>	Preparation Kit	DIATECH	25
Step 4	<b>Debridement</b>	Hand Files Hand Files Accessories	HYGENIC ROEKO	28
Step 5	<b>Working length measurement</b>	Apex Locator	CanalPro	32
Step 6	<b>Canal preparation</b>	NiTi-Files NiTi-Files Accessories Cordless Handpiece	HyFlex HyFlex CanalPro	35
Step 7	<b>Irrigation</b>	Rinsing Solutions Rinsing Accessories	CanalPro CanalPro	43
Step 8	<b>Drying</b>	Paper Points Aspirator Tips	ROEKO ROEKO	52
Step 9	<b>Medicamentation</b>	Calcium Hydroxide Points Chlorhexidine Points	ROEKO ROEKO	59
Step 10	<b>Temporary restoration</b>	Temporary filling material	Coltosol DuoTEMP	61
Step 11	<b>Obturation</b>	Root canal sealer Root canal filling material Guttapercha Points Accessories	RoekoSeal GuttaFlow ROEKO ROEKO	64
Step 12	<b>Definite restoration</b>	Cylindrical Metal-Posts Cylindrical and conical Fiber-Posts Cylindro-conical Posts Dual-cured composite resin system	ParaPost ParaPost TENAX ParaCore	75



## Step 1 Diagnosis



Obtaining an accurate diagnosis is a critical step in endodontic treatment. In addition to reviewing the patient's chief complaint, medical history, dental history, and history of symptoms, objective findings must be collected and radiographs must be reviewed in order to make a definitive diagnosis.



Percussion Test



Icing the Pellet with Endo-Frost



Cold testing with Endo-Frost

The normal response of nerve fibers can be tested by stimulating the nerve endings of the pulp with a cold spray. As a result of this test, the vitality (existing blood flow) of the tooth can be verified.

It's important to note that use of pain relief drugs can cause a false reading (tooth is vital but does not respond to cold) or that a false cold sensation may occur on teeth with an adjacent metal restoration.



# roeko Endo-Frost





### ROEKO Endo-Frost



- Cold spray, 200 ml
- Temperature -50 °C
- Spray nozzle for precise application
- For freezing pellets and dental rolls
- Odorless

#### Endo-Frost

Cold spray, 200 ml

240000

### ROEKO Endo-Frost Pellets



- Are cooled to test the vitality of the tooth
- Can be used with Solomat dispensers

#### Endo-Frost Pellets

Approx. 4 × 4 × 4 mm, 500 pcs

240001

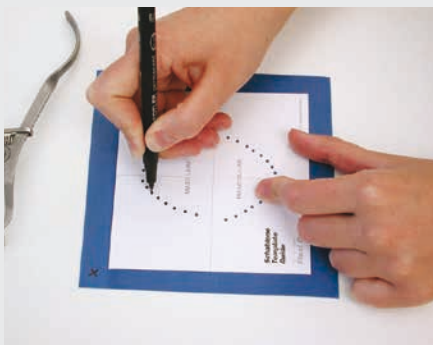
Infection  
control

**Endodontics**

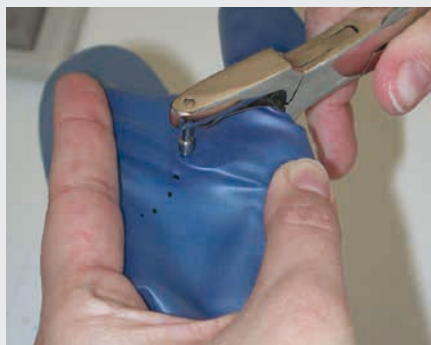


Successful root canal therapy must begin with proper infection control. The Dental Dam is used in dentistry to isolate teeth during dental procedures. Treatment quality significantly increases with the use of the Dental Dam during root canal preparation, changing of medicaments, and obturation because the dental dam allows for an aseptic working environment and retracts the cheek and tongue to allow for optimal viewing. Protecting the mucosa from injury and chemical burns and preventing aspiration of irrigants and instruments, the Dental Dam also ensures that the treatment is delivered safely and efficiently. The use of the Dental Dam is a

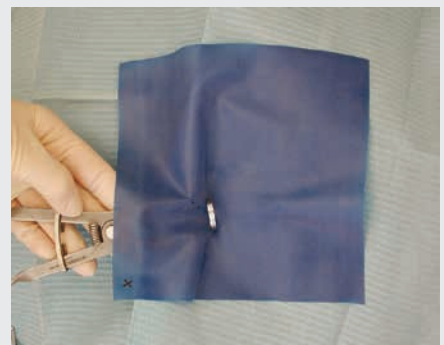
standard of care with root canal therapy and no endodontic procedure should be performed without the Dental Dam in place.



Marking Dam



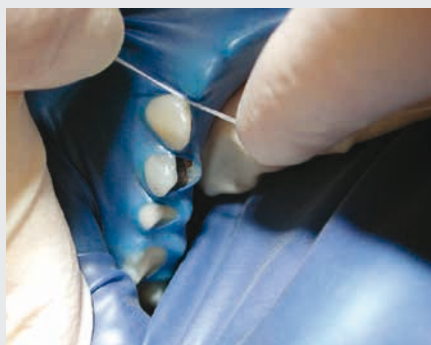
Punching Dam



Inserting Clamp



Applying Dam



Flossing Dam



Dam Applied

With root canal therapy, single-tooth isolation is ideal when possible. In situations where a tooth is fractured and a clamp cannot easily be stabilized on the tooth or a tooth has proximal decay, a split-dam technique can be used.

# Dental Dam





### Hygenic® Framed Flexi Dam non latex



- Convenient built-in-frame - saves time
- Highly elastic Flexi Dam material - tear resistant and easy placement
- Latex free - allergy free
- Odourless - patient conform

Size 100 × 105 mm, medium, 20 pcs	
	Purple
	H00750

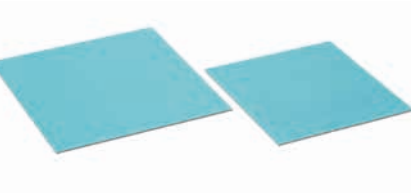
### Hygenic® Flexi Dam® non latex



- Low modulus of elasticity
- Individual sheets without powder
- Extra strength and flexible
- Odourless
- Latex free


Size 152 × 152 mm (6" × 6"), medium, 30 pcs		
	Purple	Green
	H09945	H09946

### Hygenic® Dental Dam non latex



- 100% latex free, Powderfree
- Similar tear resistance to natural rubber dam
- Minimum of three years shelf life
- Color reflective

Standard size	15 sheets
Size 152 × 152 mm (6" × 6"), medium	
Green	H09105

 Children size	15 sheets
Size 127 × 127 mm (5" × 5"), medium	
Green	H09928

Big pack Standard size	75 sheets
Size 152 × 152 mm (6" × 6"), medium	
Teal green	H09106



### Hygenic® Fiesta® Dental Dam (latex)



- Natural rubber latex
- Assorted purple, blue and pink sheets

- Fresh fruit scent for patient and staff comfort

Standard Size		36 sheets
Size 152 × 152 mm (6" × 6")		
Thin		H04639
Medium		H04642
Heavy		H04644

Children Size		52 sheets
Size 127 × 127 mm (5" × 5")		
Thin		H04640
Medium		H04641
Heavy		H04643

### Hygenic® Dental Dam (latex)



- Natural rubber latex
- Powdered

- Tear-resistant

Standard Size		36 sheets
Ready cut, Size 152 × 152 mm (6" × 6")		
Light	Thin	H00533
	Medium	H00534
	Heavy	H00535
	Extra heavy	H00536
Dark	Thin	H00538
	Medium	H00539
	Heavy	H00540
	Extra heavy	H00541
Green	Thin	H02146
	Medium	H02147
	Heavy	H02148
	Extra heavy	H02149
Blue	Medium	H03530
	Heavy	H07315

Children Size		52 sheets
Ready cut, Size 127 × 127 mm (5" × 5")		
Light	Thin	H00523
	Medium	H00524
	Heavy	H00525
	Extra heavy	H00526
Dark	Medium	H00529
	Heavy	H00530
	Extra heavy	H00531
Green	Thin	H02141
	Medium	H02142
	Heavy	H02143
Blue	Extra heavy	H02144
	Medium	H03529
	Heavy	H07314



Convenience Standard Size		360 sheets
Size 152 × 152 mm (6" × 6")		
Thin	Thin	H04242
	Green	H04246
	Medium	H04243
Medium	Light	H04243
	Dark	H04245
	Green	H04247
	Fiesta	H07317

Convenience Children Size		364 sheets
Size 127 × 127 mm (5" × 5")		
Thin	Light	H04236
	Green	H04240
Medium	Light	H04237
	Dark	H04239
	Green	H04241
	Fiesta	H07316



### Hygenic® Dental Dam on roll



Standard Size		360 sheets
Size 152 mm × 5.5 m		
Light	Medium	H00514
Dark	Medium	H00519
Green	Thin	H02174
	Medium	H02175
	Extra heavy	H02177

Children Size		364 sheets
Size 127 mm × 6.7 m		
Light	Thin	H00503
	Medium	H00504

### ROEKO Flexi Dam non latex



- Latex free
- Powder free
- More tear resistant than latex
- Highly elastic for effective isolation
- No unpleasant odor
- Purple color helps distinguish from latex dams

Flexi Dam non latex 150 × 150 mm, 0,5 mm thick, 30 pcs + template	
Purple	390035
Blue	390033

### ROEKO Elasti-Dam powder free\*



- Latex
- More tear resistant than standard latex dam
- Powder free
- Controlled low level of protein allows for less exposure to allergenic particles and reduced risk for development of latex allergy

Standard Size		36 sheets
Size 152 × 152 mm		
Medium	Green	60013793
Heavy	Green	60013794

Children Size		36 sheets
Size 127 × 127 mm		
Medium	Blue	60013795
Heavy	Blue	60013796

\* acc. to EN 455-3 < 5 mg/sheet 1) up to 44% more elastic, acc. to internal tests





## ROEKO Dental Dam Latex



### Dental Dam latex 150 × 150 mm; 36 pcs

Thin	390020
Medium	390021
Heavy	390022



### Dental Dam Set

Dental Dam Set		390000
Punch Type Ainsworth	1 pc	
Clamp forceps Type Ivory	1 pc	
Clampset	1 pc	
Flexi Dam non latex with template	30 pcs	
Frame acc. to Young	1 pc	

## Hygenic® Dental Dam Kits



### Complete Kits with punch and forceps

#### Winged or Wingless clamps

Starter Kit with Winged Clamps	H02778
6" × 6" (152 × 152 mm) Dam – green medium; 36 sheets;	
6" (152 mm) Plastic frame (H01414); Fiesta 9 winged color-coded clamp pack;	
6" Template; Wedjets Cord (small); Dental dam punch; Dental dam forceps	
Starter Kit with Winged Clamps	H02782
Plastic carrying case ; 6" × 6" (152 × 152 mm) Dam – green medium; 36 sheets;	
6" (152 mm) Plastic frame (H01414); Fiesta 9 winged color-coded clamp pack;	
6" Template; Wedjets Cord (small); Dental dam punch; Dental dam forceps	
Complete Kit with Wingless Clamps	H02790
6" × 6" (152 × 152 mm) Dam – green medium; 36 sheets;	
6" (152 mm) Plastic frame (H01414); Fiesta 9W wingless color-coded clamp pack;	
6" Template; Wedjets cord (small); Dental dam punch; Dental dam forceps	



### Standard Kits without punch and forceps

#### Winged or Wingless clamps

Kit with Winged Clamps	H02779
6" × 6" (152 × 152 mm) Dam – green medium; 36 sheets;	
6" (152 mm) Plastic frame (H01414); Fiesta 9 winged color-coded clamp pack;	
6" Template; Wedjets Cord (small)	
Kit with Wingless Clamps	H02792
6" × 6" (152 × 152 mm) Dam – green medium; 36 sheets;	
6" (152 mm) Plastic frame (H01414); Fiesta 9W wingless color-coded clamp pack;	
6" Template; Wedjets Cord (small)	
Kit with Wingless Clamps and Metal Frame	H02793
6" × 6" (152 × 152 mm) Dam – green medium; 36 sheets;	
6" (152 mm) Metal frame (H07083); Fiesta 9W wingless color-coded clamp pack	
6" Template; Wedjets cord (small)	





### Hygenic® Complete Kit with Brinker Clamps



Complete-Kit	
Hygenic Complete Kit with Brinker Clamps 5" x 5" (127 x 127 mm) Dam – green medium; 52 sheets ; 5" (127 mm) Plastic frame (H01416); Brinker universal clamp set; 5" Template; Latex Wedjets cord (small); Dental dam punch; Dental dam forceps; Non-latex Wedjets Stabilizer Cord; Instructional CD (in English)	H09715

### Hygenic® Simple Dam Kits



Simple Dam-Kit	
With Elasti-Dam 6" x 6" (152 x 152 mm) Elasti-Dam – green, medium 36 sheets (H11625) 6" (152 mm) Plastic frame (H01414) Fiesta wingless color coded clamps 6" Template Latex Wedjets (thin, yellow) Dental dam punch Dental dam forceps	H02900
With Flexi-Dam 6" x 6" (152 x 152 mm) Flexi-Dam non latex – purple, 30 sheets (H09945) 6" (152 mm) Plastic frame (H01414) Fiesta wingless color coded clamps 6" Template Latex Wedjets (thin, green) Dental dam punch Dental dam forceps	H02901

### Hygenic® Wedjets® Stabilizing Cord

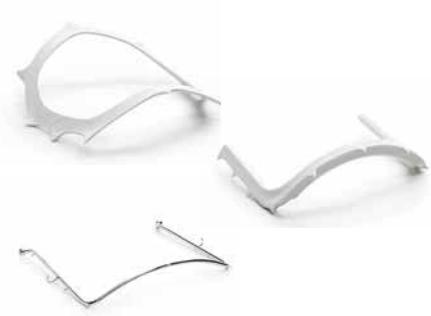


- Latex-available in 3 sizes
- Non-latex-available in 2 sizes
- Alternative to conventional clamp method of securing dental dam
- Eliminates need for use of a rubber dam clamp

Wedjets Stabilizing Cord					
Latex			Non-Latex		
Extra small, blue	7 ft. (2.1 m)	H08040	Small, lime green	7 ft. (2.1 m)	H06524
Small, yellow	7 ft. (2.1 m)	H06522	Large, aqua blue	7 ft. (2.1 m)	H06525
Large, orange	7 ft. (2.1 m)	H06523			



## Hygenic® Dental Dam Frame



- Autoclavable

### Dental Dam Frame

Ostby plastic frame – radiolucent	6" (152 mm)	H00560
U-shaped plastic frame – radiolucent	5" (127 mm)	H01416
	6" (152 mm)	H01414
U-shaped metal frame	5" (127 mm)	H07082
	6" (152 mm)	H07083

## ROEKO Template



- Durable plastic
- Aids with proper placement on the Dental Dam

### Template

390042

## ROEKO Metal frame



- U-shaped frame made of high quality chrome nickel steel
- Prongs along its length hold Dental Dam secure
- Can be sterilized in autoclave or dry heat sterilizer

### Metal frame

390040

## ROEKO Plastic frame, foldable



- Radiolucent and oval in shape
- Can be folded to allow for taking xrays and aspiration of saliva
- Autoclavable up to 134°C

### Plastic frame, foldable

390041



### ROEKO Clamp Forceps



- Can be sterilized in the autoclave or dry heat sterilizer
- Allow for secure placement of clamp to the tooth
- High quality
- Easy to handle

Clamp Forceps
390011

### ROEKO Punch



- Can be sterilized in the autoclave or dry heat sterilizer
- 8 hole size options
- Easy to handle
- High quality

Punch
390010

### Hygenic® Dental Dam Forceps



Dental Dam Forceps
Stainless Steel
H01262

### Hygenic® Dental Dam Punch



Dental Dam Punch
Stainless Steel
H01261

### Hygenic® Ora-Shield® Dental Dam Napkins



- Prevent direct contact of dental dam with sensitive skin
- Soft, non-woven fabric
- Allow for maximal absorption of saliva, water and perspiration

Ora-Shield Dental Dam Napkins 50 pcs
Fits frame sizes 5" (127 mm) and 6" (152 mm)
H01415
Fits Holder (large size)
H00841

## Hygenic® Dental Dam Stamp



- Marks standard tooth position on Dental Dam
- Compatible with most office ink pads

### Dental Dam Stamp

5" × 5"	(127 × 127 mm)	H01442
6" × 6"	(152 × 152 mm)	H01443

### Dental Dam Template

5" × 5"	(127 × 127 mm)	H01440
6" × 6"	(152 × 152 mm)	H01441

## Hygenic® Gloss Finish Wingless Clamps



- Wingless Clamps are designated with a "W" (wingless) for easy identification.

### Gloss Finish Wingless Clamps

#212	Anterior teeth	H07792
#W00	Maxillary and mandibular premolar and anterior teeth	H02769
#W2	Premolars and maxillary incisors	H02768
#W2A	Premolars and maxillary incisors	H02775
#W3	Flat jawed, small molars	H03814
#W7	Flat jawed, general purpose, mandibular molars	H02765
#W8	General purpose, maxillary molars	H02767
#W8A	Downward sloped jaws for small, partially erupted molars	H02766
#W9	Anterior teeth	H02770
#W14	For partially erupted or irregularly shaped molars	H02774
#W14A	Downward sloped jaws for large, partially erupted molars	H02764
#W56	Universal molar clamp	H03815



### Hygenic® Gloss Finish Winged Clamps



- Allow for placement of dental dam, clamp and frame as one unit

Gloss Finish Winged Clamps		
#00	Maxillary and mandibular premolars and anterior teeth	H02762
#1	General purpose, maxillary premolars	H02703
#2	Premolars and maxillary incisors	H02761
#2A	Premolars and maxillary incisors	H05688
#3	Flat jawed, small molars	H05689
#4	Small maxillary molars, deciduous teeth	H02704
#7	Flat jawed, general purpose, mandibular molars	H02758
#8	General purpose, maxillary molars	H02760
#8A	Downward sloped jaws for small, partially erupted molars	H02759
#9	Anterior teeth	H02763
#12A	Serrated jaw clamp, maxillary left molars	H02706
#13A	Serrated jaw clamp, maxillary right molars	H02705
#14	For partially erupted or irregularly shaped molars	H05690
#14A	Downward sloped jaws for large, partially erupted molars	H02757

### Hygenic® Fiesta® Color Coded Matte Finish Winged Clamps



- Color coded for easy identification
- Non-reflective
- Color coded stainless steel organizer

Fiesta Color Coded Matte Finish Winged Clamps		
#2	● Premolars and maxillary incisors	H09957
#2A	● Premolars and maxillary incisors	H09958
#4	● Small maxillary molars, deciduous teeth	H09959
#7	● Flat jawed, general purpose, mandibular molars	H09960
#8A	● Downward sloped jaws, small, partially erupted molars	H09961
#9	● Anterior teeth	H09962
#12A	● Serrated jaw clamp, maxillary left molars	H09963
#13A	● Serrated jaw clamp, maxillary right molars	H09964
#14A	● Downward sloped jaws for large, partially erupted molars	H09965



## Hygenic® Brinker Clamps (Tissue Retractors)

- Provide maximal retraction without laceration of gingival tissues
- Available as a set or sold individually

### Brinker Clamps (Tissue Retractors)

	Brinker Universal Clamp Set (one of each B-1, B-2, B-3, B-4, B-5, B-6)	H01054
B-1	Mandibular molars	H01048
B-2	Maxillary left molars	H01049
B-3	Maxillary right molars	H01050
B-4	Premolars	H01051
B-5	Premolars and incisors	H01052
B-6	Premolars and incisors	H01053

## Hygenic® Fiesta® Color Coded Matte Finish Wingless Clamps



### Fiesta Color Coded Matte Finish Wingless Clamps

#W2	● Premolars and maxillary incisors	H02794
#W2A	● Premolars and maxillary incisors	H02795
#W3	● Flat jawed, small molars	H02796
#W7	● Flat jawed, general purpose, mandibular molars	H02797
#W8	● General purpose, maxillary molars	H02798
#W8A	● Downward sloped jaws for small, partially erupted molars	H02799
#W9	● Anterior teeth	H02800
#W14A	● Downward sloped jaws for large, partially erupted molars	H02802
#W56	● Universal molar clamp	H02803



## Hygenic® Dental Dam Clamp-Sets



### Dental Dam Clamp-Sets

System-9 Winged Clamp Pack	H02701
Fiesta 9 Color-coded Clamp Pack winged	H09966
Fiesta Color-coded Clamp Organizer	H09956
Brinker (tissue retraction) Clamp Pack	H01054
Fiesta 9W Color-coded Clamp Pack wingless	H02801

## ROEKO Clamps



- Winged clamps allow for placement of Dental Dam and clamp as one unit

### Clamp Set

Clamp #00, #206, #209, #200, #201, #212	390050
---	--------

### Clamps

#00 Premolar, high bow, narrow jaw	390 051
#206 Maxillary premolars, distinctive concave jaw	390 052
#209 Mandibular premolars, flat clamp mouth	390 053
#200 Mandibular molars	390 054
#201 Maxillary molars, concave jaw shape	390 055
#211 Anterior teeth, double-bow	390 056
#212 Anterior teeth	390 057





Access

Endodontics

Debridement

Working length measurement



An ideal endodontic access allows for straight-line access to the root canal system, which permits adequate visualization of the root canals and allows for easier placement of files and irrigation needles.

Access can be initiated with a round carbide or fissure bur. For teeth with porcelain or porcelain fused to metal crowns, use of a diamond bur with water spray may be preferred so that risk of porcelain fracture can be minimized. Once penetration of the porcelain is complete, a carbide bur can be used to cut metal and dentin due to its greater cutting efficiency. After the endodontic access is initiated, the access can be extended in axial directions with a flat-ended tapered diamond bur, a standard fissure bur, or a safe-ended bur. Due to the fact that safe-ended burs are non-cutting at the tip, gouging or perforation of the pulpal floor can be prevented by using such burs.



Locating the canal



Remove dentin from pulpal floor



Removal of caries

Locating all canals can be challenging in teeth that have a high degree of coronal calcification. In such instances, using a surgical length carbide bur may be necessary to remove dentin from the pulpal floor. Ultrasonic tips can also be used for more controlled removal of dentin while searching for hidden canals.

Prior to accessing the root canal system, all caries and defective restorations should be removed. The bur that was used to remove caries and restorative materials should be switched and a new bur should always be used to continue with endodontic access.

## Endo Preparation Kit



- Selected by Professor Dr. Gambarini

Endo Preparation Kit (selected by Prof. G. Gambarini)

250062AA



ISO 001524 014 /  
200808AA

ISO 001 52 018/  
200089AA

ISO 219 524 016 /  
200391AA

ISO 198 524 014 8.0 /  
200435AA

ISO 223 066 /  
235046AA

Fig. No.  
ISO Ø 1/10 mm  
Grit Size

801L  
014  
125 µm

801  
018  
125 µm

851  
016  
125 µm

856  
014  
125 µm

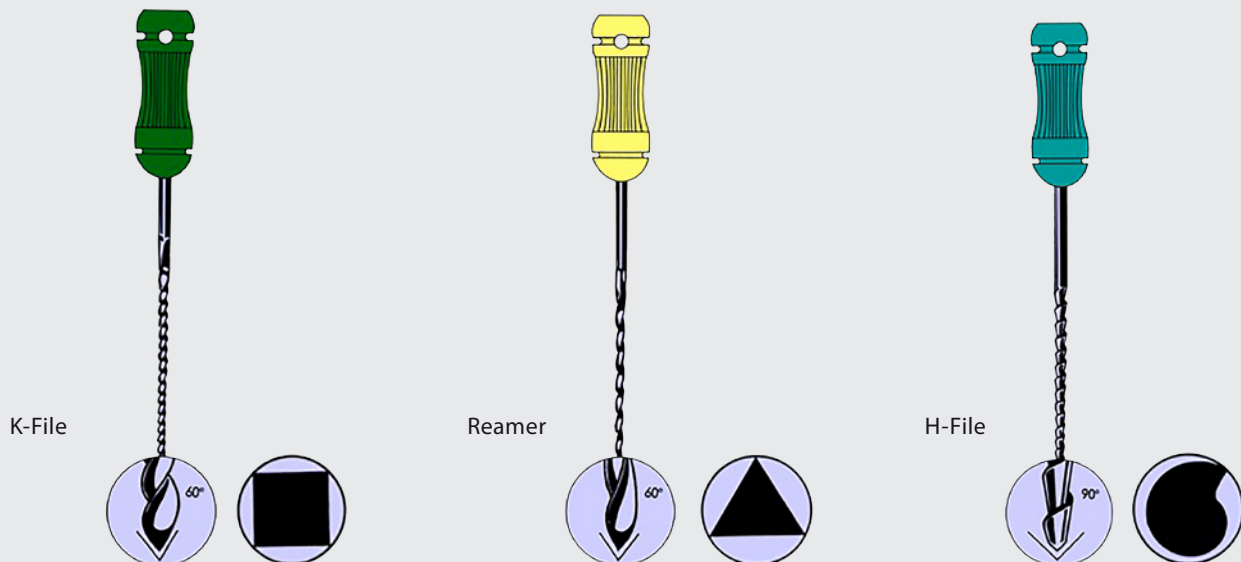
C245  
008



## Step 4 Debridement



Following placement of the rubber dam, disinfecting the working field, and accessing the tooth, debridement of the inflamed or infected pulp tissue is achieved with hand files. The files negotiate the canals to working length and establish a smooth glide path from the canal orifice to the apex. Factors, such as calcification and canal curvature can make debriding the canals extremely challenging. Appropriate irrigants, such as sodium hypochlorite (NaOCl) and ethylenediaminetetraacetic acid (EDTA), facilitate debridement of the root canal system. Hand instruments that have .02 taper are commonly used to negotiate the canal system to length.



### Such hand instruments are manufactured in three different designs:

- K-files – Square, triangular or diamond in cross-section and have an increased number of flutes. Work in a rotational motion as well as a pulling motion to clean and enlarge the canals. Primary files used for initial negotiation and debridement of the canals.
- Reamers – Triangular in cross-section and have fewer flutes. Work in a rotational motion to clean the canal system.
- H-files – Milled as opposed to twisted and often used during retreatment to remove gutta-percha. Work in a push-pull motion and cut on the pulling stroke. It is extremely important to note that due to high risk of fracture. A glide path should be created with hand or rotary glide path files.

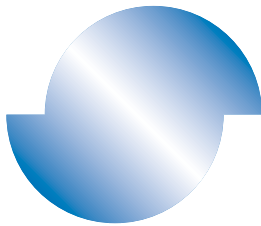
## HYGENIC® Hyflex® X-File®



- Exceptional flexibility in the apical 1/3
- Flexibility protects against ledging, zipping and transportation
- Double-fluted design to maximize cutting efficiency

### Nickel Titanium Starter Kit length 25 mm

15	6 pcs	H08438
20	6 pcs	
25	6 pcs	
30	6 pcs	
35	6 pcs	
40	6 pcs	
15-40	6 pcs	



### Nickel Titanium 6 pcs

Size	21 mm	25 mm
Assorted 15-40	H08391	H08413
Assorted 45-80	H08392	H08414
15	H08374	H08396
20	H08376	H08398
25	H08378	H08400
30	H08380	H08402
35	H08382	H08404
40	H08384	H08406
45	H08385	H08407
50	H08386	H08408
55	H08387	H08409
60	H08388	H08410
70	H08389	H08411
80	H08390	H08412



### Stainless Steel 6 pcs

Size	21 mm	25 mm
08	H08371	H08393
10	H08372	H08394



### ROEKO Root Canal Instruments



- Stainless steel
- Can be sterilized

- Effective cutting

K-Files (ISO) length 25 mm	
Size	6 pcs
Assorted 15–40	381154
Assorted 45–80	381458
8	381008
10	381010
15	381015
20	381020
25	381025
30	381030
35	381035
40	381040
45	381045
50	381050
55	381055
60	381060
70	381070
80	381080

H-Files (ISO) length 25 mm	
Size	6 pcs
Assorted 15–40	382154
Assorted 45–80	382458
8	382008
10	382010
15	382015
20	382020
25	382025
30	382030
35	382035
40	382040
45	382045
50	382050
55	382055
60	382060
70	382070
80	382080

Reamers (ISO) length 25 mm	
Size	6 pcs
Assorted 15–40	380154
Assorted 45–80	380458
8	380008
10	380010
15	380015
20	380020
25	380025
30	380030
35	380035
40	380040
45	380045
50	380050
55	380055
60	380060
70	380070
80	380080



## ROEKO Stops



- Silicone
- Radiopaque

### Stops

Stops	50 pcs	331000
-------	--------	--------

## ROEKO Endo Gauge



- Compact file holder
- Ideal for setting the length of files and points
- Can be sterilized in autoclave and chemiclave
- Diameter of 48 mm, for 12 instruments with a central well and sponge for used instruments

### Endo Gauge Type CS

Endo Gauge Type CS		330002
--------------------	--	--------

## ROEKO Sponges



- For use with Endo Gauge CS
- Autoclavable up to 134 °C

### Sponges

Sponges	40 pcs	330003
---------	--------	--------

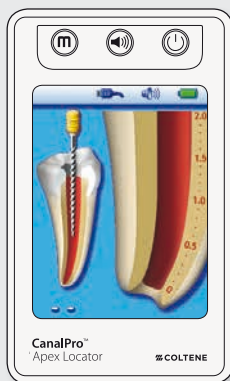


## Step 5 Working length measurement

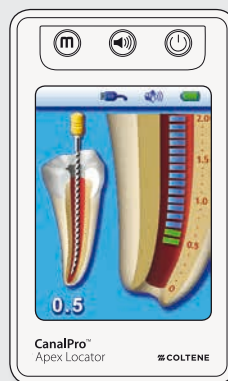


Accurate determination of working length is critical for the success of endodontic treatment. Inspection of pre-operative radiographs, use of tactile sensation, or evaluation of fluid on the tip of paper points may help with estimating working length. Modern electronic length measurement devices, such as the CanalPro Apex Locator, provide a reliable method for confirming working length. Such devices determine the location of the apical constriction with the help of electrical resistance. Electronic length measurement is often more precise than radiographic determination of working length and can be repeated at any time to verify canal length.

Working length should be measured after coronal flaring has been performed. Many canals have a coronal dentin shelf that, once removed, results in a straighter glide path and shorter working length. Obtaining working length prior to coronal flaring, therefore, can result in a working length that is inaccurate.



File tracking



Working length



Over-instrumentation

**During the use of the CanalPro Apex Locator, any of the following situations should be checked to avoid an erroneous reading:**

- Tooth with immature roots
- Tooth with a perforation
- Excessive fluid in the pulp chamber
- Canal system is too dry
- File being used for length measurement contacts a metal restoration
- Residual gutta-percha remaining in retreatment cases
- Working length measurements obtained with an electronic apex locator should always be verified with a radiograph to ensure accuracy.





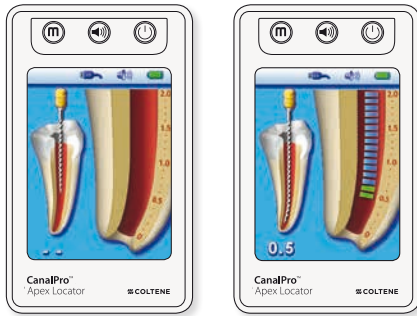
# CanalPro™ Apex Locator

# CanalPro™ Apex Locator Compact



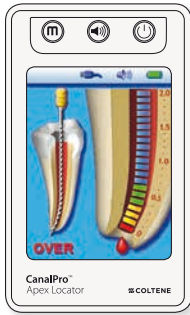


### CanalPro™ Apex Locator



File tracking

Large apical zone



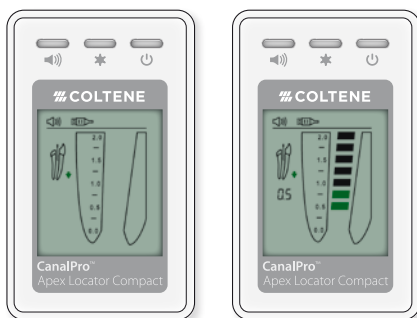
Over-instrumentation

- Brilliant, colored 3D panel
- Accuracy of measurement
- Comfortable
- Fully automatic
- Interactive operation
- Built-in demo mode
- Virtual Apex Function
- Audio feedback with volume control
- Built-in self-test for a fast function control
- Auto-off
- Rechargeable battery

#### Apex Locator

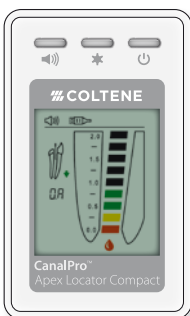
CanalPro Apex Locator EU Kit		60014334
1 × Apex Locator		
1 × Charger		
1 × Measuring cable		
2 × Lip clips		
2 × File clips		
1 × Touch probe		
Measuring cable	1 pc	60014335
File clips	2 pcs	60014336
Touch probe	2 pcs	60014337
Lip clips	5 pcs	60014338
Charger	1 pc	60014339
Rechargeable battery	1 pc	60014340

### CanalPro™ Apex Locator Compact



File tracking

Large apical zone



Over-instrumentation

- Results in canals with dry and wet condition
- LCD for optimal performance
- Built-in demo mode to demonstrate operation

#### Apex Locator Compact

CanalPro Apex Locator Compact EU-Kit		60019095
1 × Apex Locator Compact		
1 × Holder		
2 × Lithium button cells CR2032		
1 × Measuring cable		
2 × Lip clips		
2 × File clips		
1 × Touch probe		
1 × Screwdriver		
1 × User Guide		
Measuring cable	1 pc	60014335
File clips	2 pcs	60014336
Touch probe	2 pcs	60014337
Lip clips	5 pcs	60014338

# Endodontics

## Canal preparation



## Step 6 Canal preparation



The primary objectives of canal preparation are to remove infected tissue, provide irrigants access to the entire length of the canal, and create space for placement of medicaments and the definitive obturation material. As long as the clinician respects canal anatomy and geometry as he/she works to achieve the primary objectives as outlined above, a successful outcome can be achieved regardless of technique used.

A new generation of NiTi heat-treated files have increased superelasticity compared to traditional NiTi files and lack pseudo elasticity. Such benefits allow for superior canal tracking during instrumentation and practically eliminate the risk for procedural errors, such as file separation and canal transportation. Larger apical preparation sizes, which are needed to eliminate intracanal biofilm and adequately debride the apical region of the canal, can be achieved safely. In addition, with the lack of pseudo elasticity the files can be pre-bent, they are ideal for use in patients with limited opening or with teeth in which access to the root canal system is challenging.



HyFlex CM file



HyFlex CM pre-curved



HyFlex CM canal prep

### An example of how to safely instrument the canal system once a tooth has been properly isolated with a Dental Dam:

- Access and locate the canals
- Establish a glide path at the estimated working length with HyFlex GPF files
- Coronally flare the canals with an orifice opener (25/08) or Gates Glidden burs
- Confirm working length with an electronic apex locator
- To confirm glide path, hand filing up to #20 is recommended
- Instrument the canals using HyFlex CM rotary files using the following sequence, inserting all files to working length, 20/04, 25/04, 20/06, 30/04, 40/04.
- Check patency in between each file change
- If resistance occurs repeat prior step

# HyFlex™ CM & EDM CanalPro™ CL & CL 2





### HyFlex™ CM – The regenerative NiTi File

Controlled memory + Extreme flexibility = Superior canal tracking

HyFlex Controlled Memory NiTi Files have been manufactured utilizing a unique process that controls the material's memory.



✓ Before use



✓ After use



✓ After heat treatment



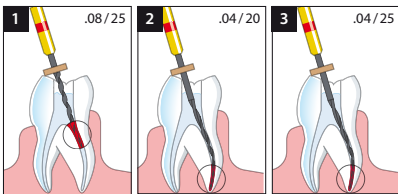
x Untwisted (discard)

#### Advantages:

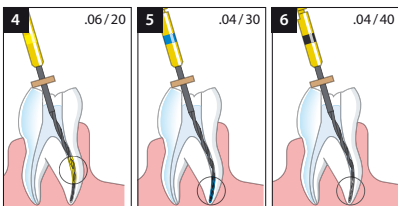
- The files are extremely flexible and have controlled memory.
- This gives the file the ability to follow the anatomy of the canal very closely, reducing the risk of ledging, transportation or perforation.
- The files can be pre-bent, to allow for easy insertion into canals with limited opening.

#### Regains shape after heat treatment = Multi-use

- HyFlex CM NiTi Files respond to excessive resistance with straightening of the spirals, which avoids binding to the walls and therefore increases fracture resistance.
- This form adaptation can be reversed quickly by heat treatment (during autoclaving or with a glass bead sterilizer) returning the instruments back to their original shape.
- Furthermore the heat treatment will strengthen the files making them a lot more resistant to cyclical fatigue.
- Also the heat treatment provides a clear visual opportunity to verify safe continuation of file use.



If working length is reached, it may be possible to go to Step 4.



#### Up to 300 % more resistance to separation

HyFlex CM NiTi Files with Controlled Memory are up to 300 % more resistant to cyclical fatigue compared to conventional NiTi files, which substantially helps reducing the incidence of file separation.

#### Step by Step

HyFlex CM NiTi Files can be used with crown-down, step-back or our recommended single length technique (500 rpm, up to 2.5 N·cm).

## HyFlex™ CM NiTi Files



### HyFlex GPF Sequence

Size	25 mm
2 × 15/.01, 2 × 15/.02, 2 × 20/.02	60018753

### HyFlex CM NiTi File Refills, 6 pcs

Size	19 mm	21 mm	25 mm	31 mm
25/08	60011048			
15/04		60011049	60011065	60018284
20/04		60011050	60011066	60018285
25/04		60011052	60011067	60018286
30/04		60011053	60011068	60018287
35/04		60011054	60011069	
40/04		60011055	60011070	60018288
45/04		60011056	60011071	
50/04		60011057	60011072	60018289
60/04		60011058	60011073	60018290
20/06		60011059	60011074	60018291
25/06		60011060	60011075	
20/06, X-tra Spirals		60018699	60018700	60018701
25/06, X-tra Spirals		60018702	60018703	60018704
30/06		60011061	60011076	60018292
35/06		60011062	60011077	
40/06		60011063	60011078	60018293

### HyFlex CM NiTi-Files Sequence Single length, 6 pcs

Size	21 mm	25 mm	31 mm
25/08 19 mm; 20/04; 25/04; 20/06; 30/04; 40/04	60011064	60011079	60018294

### HyFlex CM NiTi-Files Sequence Crown down, 6 pcs

Size	21 mm	25 mm	31 mm
S (25/08 19 mm; 35/04; 30/04; 25/04; 20/04; 15/04)	60018689	60018692	60018695
M (25/08 19 mm; 60/04; 50/04; 45/04; 40/04; 35/04)	60018690	60018693	60018696
L (25/08 19 mm; 40/06; 35/06; 30/06; 25/06, 20/06)	60018691	60018694	60018697

### HyFlex CM Introkit

Article	
Introkit Premium (2 × Organizer, 2 × 21 mm Sequence, 2 × 25 mm Sequence, 1 × ROEKO GP Greater Taper)	60019533
Introkit Compact (1 × Organizer, 1 × 25 mm Sequence, 1 × ROEKO GP Greater Taper)	60018786



### HyFlex™ EDM – Electrical Discharge Machining

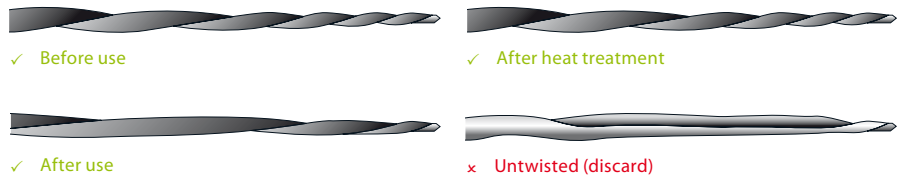
The new HyFlex EDM files constitute the 5th generation root canal files. HyFlex EDM NiTi files have completely new properties due to their innovative manufacturing process using electric discharge machining. Workpieces are machined in the EDM manufacturing process by generating a potential between the workpiece and the tool. The sparks generated in this process cause the surface of the material to melt and evaporate.

This creates the unique surface of the new Niti files and makes the HyFlex EDM files stronger and more fracture resistant. This entirely unique combination of flexibility and fracture resistance makes it possible to reduce the number of files required for cleaning and shaping during root canal treatments without having to compromise preservation of the root canal anatomy.

Just like HyFlex CM files, HyFlex EDM files have the already familiar controlled memory effect (CM). This results in very similar properties in terms of material flexibility and regeneration.

#### Advantages:

- Up to 700% higher fracture resistance
- Specially hardened surface
- Less filing required for treatment success



CORONAL  
MIDDLE  
APICAL

Optional Access Opening



25/12 Orifice Opener

Glidepath



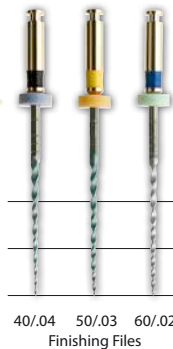
Hand File      10/05 Glidepath File

Shaping



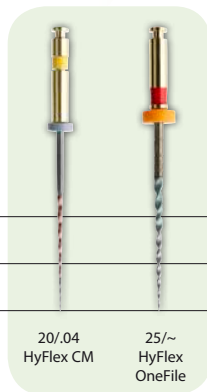
25/~ HyFlex OneFile

Optional Finishing



40/04      50/03      60/02  
Finishing Files

Shaping



20/04 HyFlex CM      25/~ HyFlex OneFile



CORONAL  
MIDDLE  
APICAL

#### HyFlex™ EDM

##### Reduced Number of Files

Depending on the clinical situation, use of HyFlex EDM files reduces the number of files to 2-3 pieces particularly in straight and larger canals.

All HyFlex EDM NiTi Files can be used at 400 rpm and at a torque of up to 2.5 Ncm (25 mNm) excepted the Glidepath files which can be used with 300 rpm and at a torque of up to 1.8 Ncm (18 mNm)

#### HyFlex™ EDM / CM Combination

For canals with medium curvature, a combination of HyFlex EDM and HyFlex CM files are recommended (500 rpm; 2.5 Ncm (25 mNm)).



## HyFlex™ EDM NiTi Files



HyFlex EDM NiTi Files Sequence	
Content / Size	25 mm
Shaping Set 10/05; 25/~; 25/12 15 mm	60019363
Finishing Set 40/04; 50/03; 60/02	60019364

HyFlex EDM NiTi Files Refills, 3 pcs		
Size	15 mm	25 mm
25/12 Orifice Opener	60019596	
10/05 Glidepath File		60019594
25/~ HyFlex™ OneFile		60019595
40/04 Finishing File		60019597
50/03 Finishing File		60019598
60/02 Finishing File		60019599

HyFlex EDM Introkit	
<b>Article</b>	
Introkit Compact (1 × Organizer, 1 × HyFlex EDM Shaping Set + 40/04 Finisher File, 1 × ROEKO GP Greater Taper)	60019660

## HyFlex™ Accessories



HyFlex Accessories		
Article	Content	
Endo Procedure Block	1 pc	60011083
Endo Organizer	1 pc	60018783
Endo Practice Block Pack	3 acrylic blocks	60011085





### CanalPro™ CL (Cordless Handpiece)



- Ergonomic design and control
- Big, user friendly LCD area
- 5 storage programs
- Auto-reverse mod
- 6 head positions allow contra angle head to be adjusted to your preferred position
- Operating time: approx. 80 min.
- Quick charging time of approx. 90 min.
- Contactless charging via induction
- Power saving mode after 10 min. when not in use
- Contra angle head is autoclavable at 135 °C
- Rotation Speed: 140 ~ 550 rpm
- Torque Level: 0.3 ~ 3.0 Ncm

#### CanalPro CL & Accessories

Complete Set EU / UK (without Apex Locator connection) 1 × Motor Handpiece, 1 × Charger, 1 × Contra Angle 16:1	60011035 / 60011036
Complete Set EU / UK (with Apex Locator connection) 1 × Motor Handpiece, 1 × Charger, 1 × Contra Angle 16:1 AL	60014050
Motor Handpiece	1 pc 60011037
Charger	1 pc 60011038
Contra Angle 16:1 (without Apex Locator connection)	1 pc 60011039
Contra Angle 16:1 AL (with Apex Locator connection)	1 pc 60013747

### CanalPro™ CL 2 (Cordless Handpiece)



- Ergonomic design and control
- Big, user friendly LCD area
- Multiple speed settings, Torque Level, Auto-reverse mod and Translation ratio
- Audio feedback for Auto-reverse mod
- Acoustic warning signal by 75 % of the set torque value
- 6 storage programs
- Operating time: approx. 90 min.
- Rotation Speed: 120 ~ 500 rpm
- Torque Level: 0.3 ~ 3.0 Ncm

#### CanalPro CL 2 & Accessories

Complete Set EU 1 × Motor Handpiece, 1 × Motor Handpiece Cover, 1 × Charger, 1 × Charging Cable, 1 × Contra Angle 16:1, 1 × Oil supply	60019362
Motor Handpiece	1 pc 60018730
Motor Handpiece Cover	1 pc 60018735
Charger	1 pc 60018733
Charging Cable (EU)	1 pc 60019371
Contra Angle 16:1	1 pc 60018731
Oil supply	1 pc 60018736

Irrigation  
**Endodontics**  
Drying  
Medicamentation

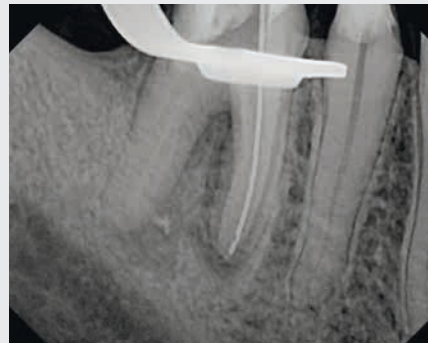


## Step 7 Irrigation



As studies have shown that approximately 40-50% of the root canal space remains untouched by conventional endodontic files, mechanical debridement alone cannot sufficiently clean and disinfect the root canal system. Chemical debridement in combination with mechanical debridement, also known as chemomechanical debridement, is necessary for successful root canal treatment.

Irrigants are used to help dissolve vital and necrotic tissue, eradicate bacteria and other microorganisms, remove the smear layer, and lubricate the canal system. As no single irrigant exists that can accomplish all of the above goals, multiple solutions must be used during clinical treatment. Sodium hypochlorite (NaOCl), ethylenediaminetetraacetic acid (EDTA), and 2% Chlorhexidine (CHX) are commonly used for chemical debridement during the process of canal preparation.



Side-port irrigation tip taken to proper length

Mixing NaOCl with CHX results in formation of an orange carcinogenic precipitate known as parachloroaniline. Clinicians, therefore, should use extreme caution not to use the two irrigants in succession. EDTA can be used to neutralize NaOCl so that CHX can be used safely. An example of a common irrigation protocol is as follows:

- NaOCl used throughout the process of canal instrumentation
- EDTA used to remove the smear layer once canal instrumentation is complete
- 2% CHX used as the final irrigant before obturation

# CanalPro™ Wurzelkanalspüllösungen

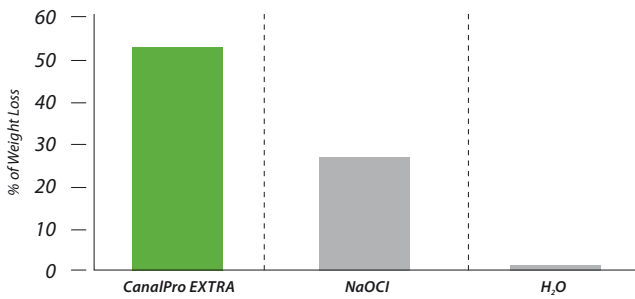




### CanalPro™ – Endodontic Irrigating Solutions

When it comes to irrigating, CanalPro Endodontic Solutions are your best choice for successful treatment. We have engineered our endodontic solutions to minimize the time spent on irrigation, giving you the best approach to cleansing canals and the BEST OUTCOMES.

Comparison of Tissue Dissolution Capability at Room Temperature:



Results:

Solution		CanalPro EXTRA	6 % NaOCl	H <sub>2</sub> O
Tissue Weight (mg)	Before Treatment	79,78 ± 10,59	73,76 ± 6,10	62,18 ± 6,17
	After 5 minutes	37,52 ± 6,54	53,72 ± 7,01	61,88 ± 5,62
Percentage of Weight Loss in % (±SD)		53,16 ± 2,60	27,25 ± 5,62	0,41 ± 1,10

### CanalPro™ SyringeFill



- Innovative, modular system for the safe and efficient filling of syringes with irrigation solutions.
- Protects against contamination
- Safe and clean dispensing
- Time-saving one-hand use
- Prevents loss of material

SyringeFill		
Station		60019661
1 × Bottle holder incl. base		
1 × CanalPro NaOCl 3 %, 500 ml		
3 × CanalPro SyringeFill Cap		
Holder		60019667
1 × Bottle holder		
1 × CanalPro NaOCl 3 %, 500 ml		
3 × CanalPro SyringeFill Cap		
Cap	1 pc	60019662

### CanalPro™ NaOCl



- For irrigation/debridement of root canals during and after instrumentation
- Available in 3% and 6% formula

NaOCl		
3%	500 ml	60019655
6%	500 ml	60019656

### CanalPro™ EDTA 17%



- pH value 8.5
- Removes smear layer and dentin mud
- Opens dentin tubules
- Disinfection solutions (e.g. alcohol) to work better
- Better adhesion of sealers and obturation materials

EDTA 17%		
17%	100 ml	60019654
17%	500 ml	60019651

### CanalPro™ CHX 2%



- Chlorhexidine digluconate solution
- Recommended for additional rinsing and during revisions
- Very effective against E. faecalis and fungi

CHX 2%		
2%	100 ml	60019659
2%	500 ml	60019658



**\*\* Only available until 31.12.2017!**

**CanalPro™ EXTRA NaOCl 6%\*\***



- For irrigation/debridement of root canals
- Same formula as Chlor-XTRA™\*\*
- 2 × more efficient
- Powerful wetting agents and proprietary surface modifiers enable penetration into hard-to-reach areas such as lateral canals and isthmuses
- 2 × increased digestive action or ability to regular sodium hypochlorite solutions cuts tissue dissolution time in half

EXTRA NaOCl		
6%	480 ml	60011159

\* Chlor-XTRA is not a trademark of Coltène/Whaledent.

**CanalPro™ NaOCl 3 / 6%\*\***



- For irrigation/debridement of root canals
- Available in 3 % and 6 % formula

NaOCl		
3%	480 ml	60011160
6%	480 ml	60011161

**CanalPro™ EDTA 17%\*\***



- 17 % EDTA solution (pH 8.5)
- Removes smear layer and dentin mud
- Opens dentin tubules to increase penetration of disinfecting solutions
- Allow for better adhesion of sealer and obturation materials

EDTA		
17%	480 ml	60011157
17%	120 ml	60011158

**CanalPro™ CHX 2%\*\***



- 2 % chlorhexidine digluconate solution
- Substantive
- Very effective against E. faecalis and fungi

CHX		
2%	480 ml	60013994
2%	120 ml	60014327



## CanalPro™ Color Syringes



- Latex-Free
- Offer a fast, easy way to organize and identify syringes
- Color coded
- Available in 10 ml and 5 ml

### Color Syringes 50 syringes/box

	10 ml	5 ml
Red	60011173	60019321
Blue	60011174	60019322
Yellow	60011175	60019323
White	60011176	60019324

## CanalPro™ Syringe Warmer



- For 10 ml syringes
- Heats to 55 °C
- Ideal to heat anastatics and composites
- Gives higher efficiency to rinsing solution at lower concentration

### Syringe Warmer

Syringe Warmer	1 pc	60011183
----------------	------	----------



### CanalPro™ Flex Tips



- Bendable for optimal access
- Excellent canal tracking
- Non-kink polyamide tip
- Disposable (single use) tip
- From curve 25 mm length

Flex Tips 20 / cup		
	30 ga; 0,3 mm	60011164

### CanalPro™ Slotted-End Tips



- Ideal for irrigation of sinus tract
- Slotted and side-vented
- 25 mm length

Slotted-End Tips 100 / bag		
	27 ga; 0,4 mm	60011167
	30 ga; 0,3 mm	60011168

### CanalPro™ Side-Port Tips



- Closed end for side port delivery
- 25 mm length

Side-Port Tips 100 / bag		
	27 ga; 0,4 mm	60011169
	30 ga; 0,3 mm	60011170



## ROEKO CanalBrush™



- Highly flexible
- Made of polypropylene
- To remove dentin, plaque and other impurities loosened by files and drills
- Increases considerably the cleaning effect of irrigating solutions on the root canal surface. Better cleaning effect than with files, without enlarging the canal
- Autoclavable at 134 °C
- Can be used to place post cements or adhesives
- Very flexible, lower risk of breakage
- Endo stops permit length control

### CanalBrush

Assorted S, M, L	30 pcs + stops	378000
Size S	10 pcs + stops	378020
Size S	20 pcs + stops	378120
Size S	50 pcs + stops	378220
Size M	10 pcs + stops	378025
Size M	50 pcs + stops	378225
Size L	10 pcs + stops	378030
Size L	20 pcs + stops	378130
Size L	50 pcs + stops	378230

## ENDO Cleaning Pack



- 20% savings compared to single purchase
- This practical package offers the dentist all basic steps for the rinsing and drying process of an endodontic treatment

### ENDO Cleaning Pack

ENDO Cleaning Pack	60019125
1 x ROEKO Surgitip-endo (20 pcs/pack)	
1 x CanalPro NaOCL 3% (480 ml)	
1 x ROEKO Canal Brush assort. S,M,L	
1 x ROEKO Paperpoints Top Color assort. 15-40	
1 x ROEKO Cotton Pellets, size 1 (10 gr)	
5 x CanalPro Slotted-End Tips, 27 ga	
5 x CanalPro Color coded syringes (red)	



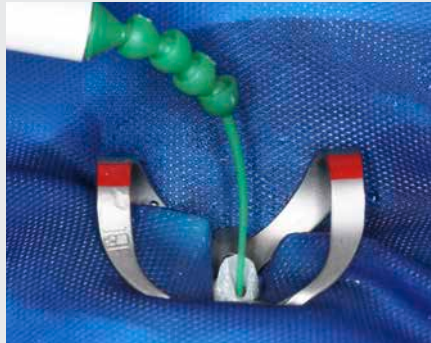
## Step 8 Drying



Following instrumentation and irrigation, the root canal system must be dried prior to placement of either the obturation material or an inter-appointment medicament. The presence of residual irrigation solutions or fluid from the periapical tissues in the root canal system may prevent establishment of an adequate seal.



Surgitip-endo dries fast



Surgitip-endo visibility



Paper Points

Paper Points inserted into the canals to working length are traditionally used to dry the canals and are available in various sizes. Larger, thicker points can be used initially to absorb a majority of the fluid from the coronal and middle thirds of the canals. Points with smaller tips and less taper can then be used to finish the drying process. Complete drying of the canals can be verified when Paper Points are inserted into the canals to working length and no moisture appears on the tips of the Points.

## ROEKO Paper Points

- Sterile
- Highly absorbent
- No adhesives
- Firm yet flexible for easy application
- Length: ISO and conventional  $\geq 25$  mm
- Assorted or individual sizes

## ROEKO Paper Points Top color



- White tip, end colored
- Prevents mixing up of sizes
- Monitors the cleaning and drying of the root canal

(ISO)-Drawer box			
Size	200 Stk.	Size	500 Stk.
Assorted 15–40	344596	Assorted 15–40	344696
15	344515	15	344615
20	344520	20	344620
25	344525	25	344625
30	344530	30	344630
35	344535	35	344635
40	344540	40	344640
Size	120 Stk.	Size	300 Stk.
Assorted 45–80	344597	Assorted 45–80	344697
45	344545	45	344645
50	344550	50	344650
55	344555	55	344655
60	344560	60	344660
70	344570	70	344670
80	344580	80	344680
Assorted 90–140	344598		
90	344590		
100	344591		
110	344592		
120	344593		
130	344594		
140	344595		



(ISO)-Cellpack			
Size	180 pcs	Size	180 pcs
Assorted 15–40	344896	Assorted 45–80	344897
15	344815	45	344845
20	344820	50	344850
25	344825	55	344855
30	344830	60	344860
35	344835	70	844870
40	344840	80	344880

### ROEKO Paper Points color



- Prevents mixing up of sizes
- Color becomes deeper, when in contact with moisture
- Will turn white, when in contact with sodium hypochlorite or hydrogen peroxide

(ISO)-Drawer box			
Size	200 pcs	Size	500 pcs
Assorted 15–40	340201	Assorted 15–40	341596
15	340215	15	341515
20	340220	20	341520
25	340225	25	341525
30	340230	30	341530
35	340235	35	341535
40	340240	40	341540
Size	120 pcs	Size	300 pcs
Assorted 45–80	340202	Assorted 45–80	341597
45	340245	45	341545
50	340250	50	341550
55	340255	55	341555
60	340260	60	341560
70	340270	70	341570
80	340280	80	341580
Assorted 90–140	340204		
90	340290		
100	340210		
110	340211		
120	340212		
130	340213		
140	340214		

## ROEKO Paper Points white



- White points
- Monitors the cleaning and drying of the root canal
- Assorted or individual sizes

(ISO)-Drawer box			
Size	200 pcs	Size	500 pcs
Assorted 15–40	340154	Assorted 15–40	341154
15	340015	15	341015
20	340020	20	341020
25	340025	25	341025
30	340030	30	341030
35	340035	35	341035
40	340040	40	341040
Size	120 pcs	Size	300 pcs
Assorted 45–80	340458	Assorted 45–80	341458
45	340045	45	341045
50	340050	50	341050
55	340055	55	341055
60	340060	60	341060
70	340070	70	341070
80	340080	80	341080
Assorted 90–140	340914		
90	340090		
100	340100		
110	340110		
120	340120		
130	340130		
140	340140		



### ROEKO Paper Points conventional

- White points
- More tapered than ISO points, ideal for more conically-shaped root canals

- Assorted or individual sizes



Drawer box		
Size	200 pcs	500 pcs
Assorted XXF-XL	342000	343000
XXF	342001	343001
XF	342002	343002
F	342003	343003
Size	120 pcs	300 pcs
M	342004	343004
L	342005	343005
XL	342006	343006

Cellpack	
Size	180 pcs
Assorted XXF-XL	346000
XXF	346001
XF	346002
F	346003
M	346004
L	346005
XL	346006



## ROEKO Paper Points Greater Taper

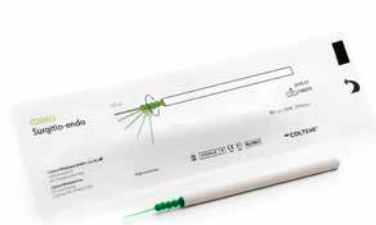


- Length  $\geq 28$  mm
- Top Color coded
- The diameter of the tip corresponds to the ISO sizes
- Assorted or individual sizes
- Ideal for drying root canals which have been prepared with HyFlex CM files, GT Files, HERO, ProFile, Quantec etc.
- Available with a taper of 4% or 6%

Drawer box 100 pcs		
	0.04	0.06
15	60019011	
20	60019012	60019030
25	60019013	60019031
30	60019014	60019032
35	60019015	60019033
40	60019016	60019034
45	60019017	60019035
50	60019018	
60	60019019	
20-45	60019020	60019036

Cellpack 144 pcs		
	0.04	0.06
15	60019037	
20	60019038	60019047
25	60019039	60019048
30	60019040	60019049
35	60019041	60019050
40	60019042	60019051
45	60019043	60019052
50	60019044	
60	60019045	
20-45	60019046	60019053

## ROEKO Surgitip-endo



- Endodontic aspirator tip for the root canal
- Specially designed tip for multi-directional flexibility
- Effective aspiration and good canal accessibility
- Canal Tip ISO 60, inner diameter 0.35 mm
- Manufactured in clean room to EN ISO 14644

### Surgitip-endo

20 pcs + 1 Double Adapter

60018280



## ROEKO Surgitip-micro



- Microsurgical aspirator tip
- Sterile, ready for use in peel packs
- Specially designed for use with microscope or loupe
- Green conical tip provides excellent contrast and unblocked field of vision

### Surgitip-micro 1,2 mm tip opening

20 pcs + 1 Double Adapter	462012
100 pcs + 5 Double Adapter	462013

## ROEKO Adapter and Double Adapter



- Reliable aspiration independent of the used aspirating equipment
- For connecting Surgitip cannulas to 11 and 16 mm aspirating equipment
- Autoclavable and chemiclavable up to 134 °C

### Adapter and Double Adapter

Double Adapter $\varnothing 6.5 > \varnothing 11 > \varnothing 16$ mm	1 pc	463000
Adapter $\varnothing 11 > \varnothing 16$ mm	1 pc	463011
Adapter $\varnothing 6.5 > \varnothing 11$ mm	1 pc	463025



Microorganisms associated with endodontic infections may persist within the root canal system following chemomechanical debridement due to the microorganisms being resistant to endodontic irrigants and/or inaccessible to endodontic files. Placement of a medicament that can diffuse into irregularities of the root canal system and further disinfect the root canal space may increase the success of root canal treatment.

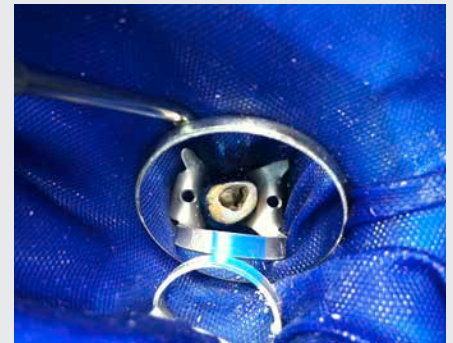
The most commonly used interappointment medicament is calcium hydroxide. One benefit of calcium hydroxide is that it can neutralize endotoxin. It is recommended that calcium hydroxide be left in a tooth for one week to one month to ensure disinfection and resolution of symptoms. In cases with a persistent periapical lesion or when symptoms do not resolve after placement of a standard calcium hydroxide product, use of calcium hydroxide mixed with chlorhexidine or iodine may be indicated.



Insertion of Points



Length is Adjusted



Working Field View of Points Placed

In order for an interappointment medicament to be effective, it must extend the full length of the canal. Following placement of calcium hydroxide, therefore, the clinician should take a radiograph to verify that the medicament has been delivered to working length. The placement of points is a reliable way to insure coverage of the complete root canal.



### ROEKO Calcium Hydroxide PLUS Points



- Excellent alternative to calcium hydroxide pastes
- Easy to use, practical and effective
- Ensure that Ca(OH)<sub>2</sub> is applied to working length
- Clean (no smearing around the access cavity during insertion)
- Time-saving – the points are ready to use
- No mixing, easy to apply and to remove
- Greater release of Ca(OH)<sub>2</sub>, more effective over longer period
- Safe
- Assorted or individual sizes

(ISO)-Drawer box length ≥ 28 mm

Size	60 pcs	Size	60 pcs
Assorted 15–40	366896	Assorted 45–80	366897
15	366815	45	366845
20	366820	50	366850
25	366825	55	366855
30	366830	60	366860
35	366835	70	366870
40	366840	80	366880

### ROEKO activ point Chlorhexidine Points



- For temporary root canal filling and prevention of reinfection
- Gutta-percha matrix with 5% chlorhexidine diacetate
- Easy to apply and easy to remove
- Radiopaque
- Chlorhexidine is known to be highly effective against bacteria and many other organisms, yeasts and fungi, even in low concentrations
- Provides a means for applying chlorhexidine directly into the root canal
- Assorted or individual sizes

(ISO)-Drawer box length ≥ 28 mm

Size	60 pcs	Size	60 pcs
Assorted 15–40	367296	Assorted 45–80	367297
15	367215	45	367245
20	367220	50	367250
25	367225	55	367255
30	367230	60	367260
35	367235	70	367270
40	367240	80	367280

Temporary  
restoration

Endodontics

Obturation



## Step 10 Temporary restoration



A temporary restoration is placed to seal the root canal system coronally following completion of root canal therapy when the definitive restoration cannot be placed immediately or between treatment appointments when multiple visits will be required. In order to adequately seal the root canal system and prevent contamination from oral fluids, the temporary restoration should be placed to a thickness of at least 4–5 mm.

Because a temporary restoration will be subjected to masticatory forces, the ideal material should maintain its structural integrity when exposed to normal chewing forces. In addition, the material should have a smooth texture so as not to irritate the tongue or cheek.



Placing DuoTEMP



Condensing DuoTEMP



Final temporary restoration

In cases when a resin material will be placed as the definitive restoration, the clinician should use caution when choosing a temporary restorative material. Materials that contain eugenol can affect the bond of resin and therefore should not be used when a composite will be used to definitively restore the tooth.



## Coltosol® F



- Temporary filling material
- No light curing needed
- Sets with saliva for perfect marginal seal
- Eugenol-free, so it won't affect final cementation
- Radiopaque
- Creamy consistency for easy adaptation in the cavity
- No mixing and waste of material
- Easy removal in large portions
- Ideal surface hardness for posterior provisional fillings

### Coltosol F

Single Pack		5906
In jar	38 g	
Eco Pack		5911
In jar	3 × 38 g	
Syringes	5 × 8 g	5930

## DuoTEMP®



- Dual-cured temporary filling material, eugenol-free and radiopaque for temporary fillings.

### DuoTEMP

Syringe	5 g	5831
Syringes	5 × 5 g	7090



Obturation of the root canal system can be completed once debridement and disinfection have been performed. The goal of obturation is to fill the canal space in three dimensions and provide a coronal, lateral, and apical seal. Cold-filling systems provide better adaptation to the complexity of the root canal.

Gutta-percha is the most widely-used obturation material. It has the benefits of being biocompatible, radiopaque and easy to manipulate. Various obturation techniques with gutta-percha are currently practiced including, warm vertical compaction and lateral compaction. Since many root canal systems are quite complex, use of a cold filling system minimize the risk of voids due to shrinkage.



Finished Prepared Canals



Canals with Master Gutta-Percha Points

If the definitive restoration is not placed as soon as possible following obturation of the root canal system, there is a risk for coronal leakage despite sealing the endodontic access with a temporary restorative material. A 1 mm – to 2 mm – thick layer of flowable composite or glass ionomer placed over the canal orifices and into the pulp chamber can establish a coronal seal to minimize the risk for leakage.





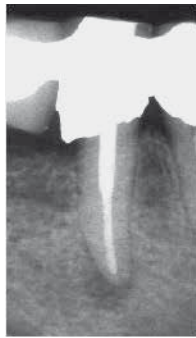
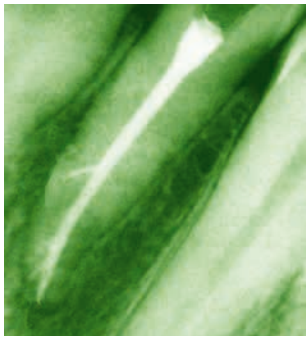
# roeko GuttaFlow<sup>®</sup>





### RoekoSeal – Making Progress in Endodontics

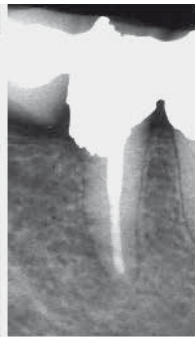
RoekoSeal is an exceptional root canal sealer. Its chemical and physical properties fulfill all the requirements of a root canal sealer. RoekoSeal combines exceptional material properties such as excellent flowability, no shrinkage and biocompatibility with practical handling. There is no risk of incorrect mixing. RoekoSeal provides an excellent seal and sets new standards in quality and biocompatibility in endodontics. RoekoSeal flows so well that the root canal and lateral canals are filled effectively. Cell tests, tests for mutagenic effects and sensibilization tests all showed negative results.



obturation



3 months



12 months

#### RoekoSeal Automix/Single Dose

Working time: up to 30 min.  
Curing time: 45 – 50 min.

#### Clinical Tests

The results of the clinical study demonstrate clearly that the periapical periodontitis has healed well and show the clinical success of RoekoSeal. The study was published in Journal of Endodontics, 2003 Apr; 36(4): 296-301

### RoekoSeal Automix

- Ready-to-use
- Dispenses just the quantity required
- Homogeneously and hygienically mixed and free of air bubbles
- Easy to use



Automix	
Set	349100
Dual-barrel syringe 1 pc; Mixing tips 12 pcs; Mixing pad, 1 pc	
Refill pack	
Mixing tips, 24 pcs	349105
Refill pack	
Dual-barrel syringe, 1 pc	349102

### RoekoSeal Single Dose



- Individual portions
- Hygienic
- Easy to use
- Perfect for pre-appointment set-up
- Sufficient material to treat one multi-rooted tooth

Single Dose	
Blister packs 40 pcs; Mixing pad, 1 pc; Spatula, 1 pc	349103



### GuttaFlow® 2 – Expansion meets Adhesion. The new GuttaFlow® - generation

GuttaFlow 2 is a novel filling system for root canals that combines two products in one: gutta-percha in powder form with a particle size of less than 30 µm, and sealer. This new filling system works with cold free-flow gutta-percha.

GuttaFlow 2 is an advancement of the existing GuttaFlow material in capsules and has the same excellent material properties:

- Two in One – combines sealer and gutta-percha
- Excellent flow properties
- Solubility is virtually zero
- Tight seal of the root canal
- Biocompatible
- Optimum protection against re-infection
- Excellent radiopacity
- Allows for precise post preparation

GuttaFlow 2 shows a slight expansion and adheres very well to the master Guttapercha Point as well as to dentin. No condensation is necessary.

New application form: GuttaFlow 2 is available in a 5 ml automix syringe:

- Syringe guarantees easy handling, dispenses just the quantity required and mixes the material homogeneously, hygienically and free of air bubbles
- Working time: 10 - 15 min.
- Curing time: 25 - 30 min.
- The use of any additional sealer is not required



**Working time:** 10-15 min.  
**Curing time:** 25-30 min.

**GuttaFlow® 2**



**Working time:** 10 - 15 min.  
**Curing time:** 25 - 30 min.

**GuttaFlow® 2 FAST**



**Working time:** 4 - 5 min.  
**Curing time:** 8 - 10 min.



## ROEKO GuttaFlow® 2



### Syringe - GuttaFlow 2

ROEKO GuttaFlow® 2 Standard Set		60013701
Dual-barrel syringe (5 ml)	1 pc	
Mixing tips	12 pcs	
Mixing pad	1 pc	
GuttaFlow 2 Refill pack dual-barrel syringe		60013745
Dual-barrel syringe (5 ml)	1 pc	
GuttaFlow 2 Refill pack mixing tips		60013719
Mixing tips	24 pcs	

### Capsules - GuttaFlow 2 Introkit

GuttaFlow 2 Introkit		60013702
Capsules GuttaFlow 2	20 pcs	
Canal Tips + Stops	20 pcs	
Adapters for RotoMix™*	3 pcs	
Dispenser	1 pc	
Guttapercha points Top Color ISO 15-40	100 pcs	
Guttapercha points Greater Taper 0.04 20-45	60 pcs	



### Refill packs capsules and accessories

Capsules GuttaFlow 2	20 pcs	60013704
Canal Tips + Stops	20 pcs	
Capsules GuttaFlow 2 FAST	20 pcs	60013706
Canal Tips + Stops	20 pcs	
GuttaFlow 2 Dispenser	1 pc	60013707
Canal Tips + Stops	20 pcs	349132
Combi Tips + Stops	20 pcs	349134
Adapters for RotoMix™*	3 pcs	349133

\* RotoMix™ ist not a trademark of Coltène/Whaledent

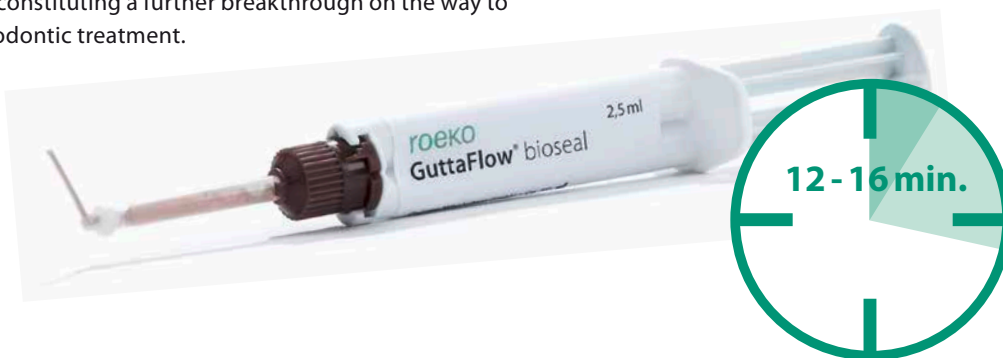


**GuttaFlow® bioseal – Bioactive obturation material. The brand new GuttaFlow® generation.**

Not just for filling, also for healing. GuttaFlow® bioseal actively supports regeneration in the root canal.

With GuttaFlow bioseal, COLTENE is launching an intelligent obturation material onto the market that can do more than seal and fill the root canal. Upon contact with fluids, the bioactive material provides natural repair constituents such as calcium and silicates. It also activates biochemical processes that provide additional support for regeneration in the root canal. The idea is remarkably simple: after curing, the new GuttaFlow bioseal forms hydroxylapatite crystals on the surface. The crystals significantly improve adhesion and also stimulate natural triggers, especially the regeneration of bone and dentine tissue. Using this catalytic effect helps both ENDO experts and novices create long-lasting solutions for their patients, thus constituting a further breakthrough on the way to optimum endodontic treatment.

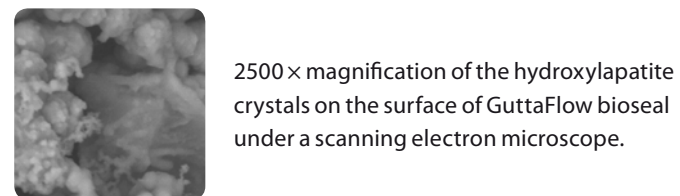
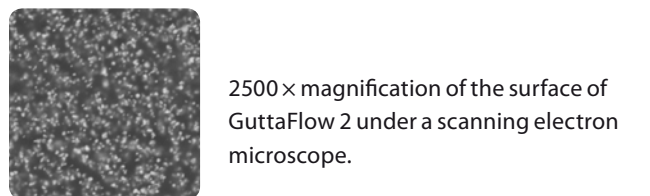
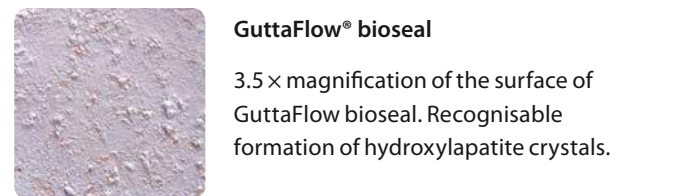
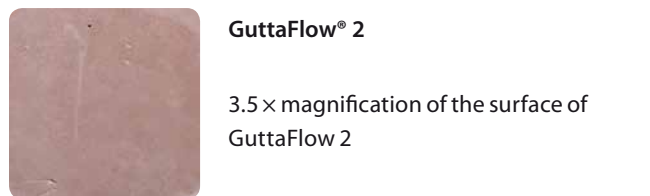
To date only dental materials such as MTA or bioglass have exhibited similar regenerative and supportive properties. However, the major disadvantages of these materials involved the long curing time and complicated handling. As with the proven GuttaFlow 2 system, GuttaFlow bioseal also combines free-flow gutta-percha with an appropriate sealer at room temperature.



**Working time:** 5 min.  
**Curing time:** 12 - 16 min.

**Step 1 (direct protection)**  
 Protection already at filling, eg. with bioactivity due to possible residual moisture in the root canal

**Step2 (sleeping protection)**  
 Regenerative protection against possible moisture ingress, eg. by cracks



Source: Internal Tests



## ROEKO GuttaFlow® bioseal



### GuttaFlow bioseal Standard Set

Standard Set		60019560
Dual-barrel syringe (5 ml)	1 pc	
Mixing tips	12 pcs	
Mixing pad	1 pc	

### GuttaFlow bioseal Refill packs applicator

Doppelkammerapplikator	1 pc	60019561
------------------------	------	----------

### GuttaFlow bioseal Refill packs Mixing tips

Mixing tips	24 pcs	60019562
-------------	--------	----------



## ROEKO Guttapercha Points Top color



- Pink tip, end colored
- Prevents mixing up of sizes

- Assorted or individual sizes

(ISO)-Drawer box length: $\geq 28$ mm	
Size	100 pcs
Assorted 15–40	365196
15	365115
20	365120
25	365125
30	365130
35	365135
40	365140
Assorted 45–80	365197
45	365145
50	365150
55	365155
60	365160
70	365170
80	365180
Assorted 90–140	365198
90	365190
100	365191
110	365192
120	365193
130	365194
140	365195

(ISO)-6 Tubes length: $\geq 28$ mm	
Size	100 pcs
Assorted 15–40	365396
15	365315
20	365320
25	365325
30	365330
35	365335
40	365340
Assorted 45–80	365397
45	365345
50	365350
55	365355
60	365360
70	365370
80	365380



## ROEKO Guttapercha Points color



- Color coded
- Prevents mixing up of sizes
- Assorted or individual sizes

(ISO)-Drawer box length: ≥ 28 mm

Size	100 pcs	Size	100 pcs
Assorted 15–40	362154	Assorted 45–80	362458
15	362015	45	362045
20	362020	50	362050
25	362025	55	362055
30	362030	60	362060
35	362035	70	362070
40	362040	80	362080

## ROEKO Guttapercha Points



(ISO)-Drawer box length: ≥ 28 mm

Size	100 pcs
Assorted 15–40	360154
15	360015
20	360020
25	360025
30	360030
35	360035
40	360040
Assorted 45–80	360458
45	360045
50	360050
55	360055
60	360060
70	360070
80	360080
Assorted 90–140	360914
90	360090
100	360100
110	360110
120	360120
130	360130
140	360140

(ISO)-6 Tubes length: ≥ 28 mm

Size	100 pcs
Assorted 15–40	361154
15	361015
20	361020
25	361025
30	361030
35	361035
40	361040
Assorted 45–80	361458
45	361045
50	361050
55	361055
60	361060
70	361070
80	361080





### ROEKO Guttapercha Points conventional



- Suitable for use as accessory points for condensation techniques
- More tapered

Drawer box length:  $\geq 28$  mm

Size	100 pcs	Size	100 pcs
Assorted XF-L (without FF)	364018	MF	364012
F+M	364019	F	364013
XXF	364009	FM	364014
XF	364010	M	364015
FF	364011	L	364017

### ROEKO Guttapercha Points Greater Taper



- Ideal for obturating root canals which have been prepared with HyFlex CM files, GT Files, HERO, ProFile, Quantec etc.
- Available with a taper of 4% or 6%
- Assorted or individual sizes
- The diameter at the tip corresponds to the ISO sizes

Drawer box 60 pcs, length:  $\geq 28$  mm

Size	0.04	0.06	Size	0.04	0.06
Assorted 20–45	361746	361846	40	361740	361840
20	361720	361820	45	361745	361845
25	361725	361825	50	60019565	
30	361730	361830	60	60019566	
35	361735	361835			

### ROEKO Guttapercha Points HyFlex™ EDM



Drawer box, length:  $\geq 28$  mm

Size	60 pcs
Assorted 25/~ – 60/02	60020210
25/~	60019568
40/04	361740
50/03	60019567
60/02	365160



### ROEKO Spreader NiTi



- For lateral condensation
- Made from nickel titanium
- Memory effect, so that they return to their original shape
- Flexible
- Very light instruments for less fatigue
- Rings on handle indicate size to allow for easy identification

Spreader NiTi		
Size	pcs	
Assorted 15–35	3 pcs	386009
15	1 pc	386015
25	1 pc	386025
35	1 pc	386035

### ROEKO Spreader



- For lateral condensation
- Stainless steel
- Rings on handle indicate size to allow for easy identification

Spreader		
Size	pcs	
Assorted 20–50	4 pcs	386000
20	1 pc	386002
30	1 pc	386003
40	1 pc	386004
50	1 pc	386005

### ROEKO Plugger



- For vertical condensation
- Stainless steel
- Millimetres length gradation on tips
- Rings on handle indicate size to allow for easy identification

Plugger		
Size	pcs	
Assorted 0.6–1.2 mm	4 pcs	386100
0.6 mm	1 pc	386106
0.8 mm	1 pc	386108
1.0 mm	1 pc	386110
1.2 mm	1 pc	386112

# Endodontics

## Definite restoration

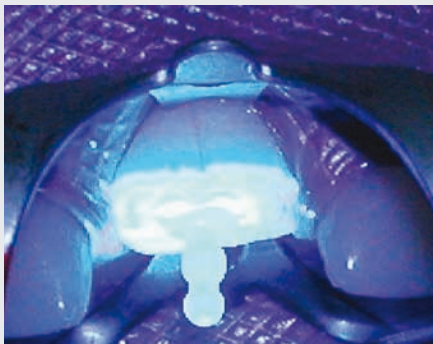


## Step 12 Definite restoration



Placement of a definitive restoration that seals the tooth coronally is critical for the long-term success of root canal treatment. Lack of a fluid-tight seal will result in bacterial contamination of the obturated root canal system and ultimate failure of the case. In addition to sealing the tooth coronally, the definitive restoration should reinforce the remaining tooth structure to prevent fracture and replace lost tooth structure to return the tooth to full function.

As a general rule, endodontically-treated posterior teeth should be restored with a core restoration and crown. When a significant amount of coronal tooth structure has been lost, a post that extends approximately two-thirds the length of the root may be indicated to provide retention for the core restoration. Posts serve the sole function of providing retention for the core material.



ParaPost FiberLux is seated in post space and cement is light-cured (if using a light-curing cement).



Core build-up using ParaCore and ParaForm Core former.



Final post and core build-up.

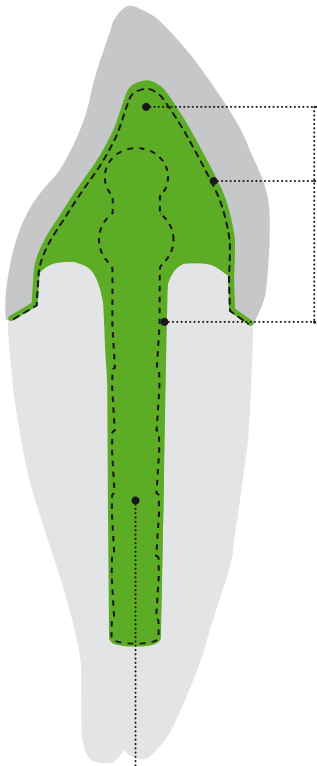
The choice of post material is often based on functional and esthetic demands of the tooth being restored in addition to the amount of remaining tooth structure and clinician preference.

# ParaPost®





## One complete system for the direct and indirect technique using active and passive root canal posts



### ParaCore® 5 ml

One material for 3 indications.

Dual cure composite cement for cementation and core build ups.

ParaCore 5 ml is approved for the following 3 key indications:

- crown & bridge cementation
- core build ups
- post cementation

Use of one material for cementation and core build ups provides an optimal "monoblock bond interface" between the post-cement-dentin-crown, resulting in a cohesive restoration with outstanding durability and strength.

### ParaPost®XT™ Threaded, Titanium Alloy Post

Threaded, parallel-sided post with rounded, undercut head for direct post/core build-ups in one appointment. Ideal for glass-ionomer/composite core build-ups which require more retention and more safety.

### ParaPost®XH™ Passive, Titanium Alloy Post

Passive cemented, parallel-sided post with rounded, undercut head for direct post/core build-ups in one appointment. Ideal for glass-ionomer/composite core build-ups which require the safety of a passive post.

### ParaPost® Fiber White/Fiber Lux/Taper Lux

ParaPost® Fiber White, Fiber Lux and Taper Lux are great alternatives to metal posts for esthetic, metal-free restorations.

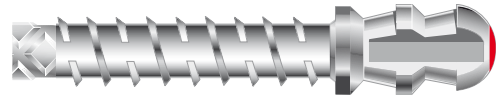
### ParaPost®XP™ Passive, Titanium Alloy or Stainless Steel Post

Passive cemented, parallel-sided post with flat head for direct post/core build-ups in one appointment. Ideal for multi-rooted post/core build-ups.

### ParaPost®XP™ Casting Components

Passive cemented, parallel-sided, prefabricated casting components for the direct/indirect casting technique. Ideal for clinical situations requiring the additional strength of a precision, one-piece cast post/core and choice of alloy.

Active



Passive



Passive



Passive



Passive





## ParaPost® X™ System

- A complete family of posts for any clinical situation
- State-of-the-art universal endodontic post system for all direct and casting techniques.
- Standardized system with seven sizes including two intermediate sizes
- Non-end cutting, depth-calibrated drills for precise canal preparation
- Diamond pattern design, multiple venting channels

## ParaPost® XT™



- Titanium alloy post
- Threaded, parallel-sided post with rounded, undercut head for direct post/core restoration in one appointment
- Ideal for glass-ionomer/composite core restorations which require more retention and more safety
- Active

### Introductory Kit

One-Office-Visit Technique; Titanium Alloy Posts				P680T
Size			pcs	
3	ø 0.90 mm	Brown	3 pcs	
4	ø 1.00 mm	Yellow	5 pcs	
4.5	ø 1.14 mm	Blue	5 pcs	
5	ø 1.25 mm	Red	5 pcs	
5.5	ø 1.40 mm	Purple	4 pcs	
6	ø 1.50 mm	Black	3 pcs	
ParaPost XT Drills			6 pcs	
Universal Hand Driver			1 pc	
Metal Wrench A for size 3, 4, 4.5			1 pc	
Metal Wrench B for size 5, 5.5, 6			1 pc	

### Metal Wrenches

Wrench A for sizes 3, 4, 4.5	1 pc	L594
Wrench B for sizes 5, 5.5, 6	1 pc	L595
Wrench A+B	2 pcs	L596

### Universal Hand Driver

	1 pc	L590
--	------	------



### Titanium Alloy Posts Refill

Size			10 pcs	25 pcs
3	ø 0.90 mm	Brown	P6830	P6830B
4	ø 1.00 mm	Yellow	P6840	P6840B
4.5	ø 1.14 mm	Blue	P6845	P6845B
5	ø 1.25 mm	Red	P6850	P6850B
5.5	ø 1.40 mm	Purple	P6855	P6855B
6	ø 1.50 mm	Black	P6860	P6860B



Drills Refill three-fluted			
Size			3 pcs
3	ø 0.90 mm	Brown	P6230
4	ø 1.00 mm	Yellow	P6240
4.5	ø 1.14 mm	Blue	P6245
5	ø 1.25 mm	Red	P6250
5.5	ø 1.40 mm	Purple	P6255
6	ø 1.50 mm	Black	P6260
Assorted 3–6 (one of each size)			P682A

### ParaPost® XH™



- Titanium alloy post
- Passive cemented, parallel-sided post with rounded, undercut head for direct post/core build-ups in one appointment
- Ideal for glass ionomer/composite core build-ups which require the safety of a passive post

Introductory Kit			
One-Office-Visit Technique; Titanium Alloy Posts			P880
Size			pcs
3	ø 0.90 mm	Brown	4 pcs
4	ø 1.00 mm	Yellow	5 pcs
4.5	ø 1.14 mm	Blue	5 pcs
5	ø 1.25 mm	Red	5 pcs
5.5	ø 1.40 mm	Purple	2 pcs
6	ø 1.50 mm	Black	2 pcs
7	ø 1.75 mm	Green	2 pcs
ParaPost X Drills (one of each size)			7 pcs
Universal Hand Driver			1 pc



Titanium Alloy Posts Refill			
Size			10 pcs
3	ø 0.90 mm	Brown	P883
4	ø 1.00 mm	Yellow	P884
4.5	ø 1.14 mm	Blue	P884.5
5	ø 1.25 mm	Red	P885
5.5	ø 1.40 mm	Purple	P885.5
6	ø 1.50 mm	Black	P886
7	ø 1.75 mm	Green	P887





## ParaPost® XP™



- Titanium Alloy or Stainless Steel Posts
- Passive cemented, parallel-sided post with flat head for direct post/core build-ups in one appointment
- Ideal for multi-rooted core restorations

### System Introductory Kit

One-Office-Visit Technique; Stainless Steel Posts			P780
One-Appointment Technique; Titanium Alloy Posts			P780T
Size			pcs
3	ø 0.90 mm	Brown	4 pcs
4	ø 1.00 mm	Yellow	5 pcs
4.5	ø 1.14 mm	Blue	5 pcs
5	ø 1.25 mm	Red	5 pcs
5.5	ø 1.40 mm	Purple	2 pcs
6	ø 1.50 mm	Black	2 pcs
7	ø 1.75 mm	Green	2 pcs
ParaPost X Drills (one of each size)			7 pcs
Universal Hand Driver			1 pc

### Stainless Steel Posts Refill

Size			10 pcs	25 pcs
3	ø 0.90 mm	Brown	P7443	P7443B
4	ø 1.00 mm	Yellow	P7444	P7444B
4.5	ø 1.14 mm	Blue	P7444.5	-
5	ø 1.25 mm	Red	P7445	P7445B
5.5	ø 1.40 mm	Purple	P7445.5	P7445.5B
6	ø 1.50 mm	Black	P7446	-
7	ø 1.75 mm	Green	P7447	-

### Titanium Alloy Posts Refill

Size			10 pcs
3	ø 0.90 mm	Brown	P7843
4	ø 1.00 mm	Yellow	P7844
4.5	ø 1.14 mm	Blue	P7844.5
5	ø 1.25 mm	Red	P7845
5.5	ø 1.40 mm	Purple	P7845.5
6	ø 1.50 mm	Black	P7846





## ParaPost® XP™ System Introductory Kit



- Passive cemented, parallel-sided, prefabricated casting components for the direct/indirect casting technique
- Ideal for clinical situations requiring the additional strength of a precision one-piece casting post and choice of alloy.

### System Introductory Kit

Casting Technique		P781
Impression Posts (Size 3–7)	25 pcs	
Temporary Posts (Size 3–7)	25 pcs	
Burnout Posts (Size 3–7)	25 pcs	
ParaPost X Drills (one of each size)	7 pc	

### Plastic Impression Posts Refill

Size			20 pcs
3	ø 0.90 mm	Brown	P7433
4	ø 1.00 mm	Yellow	P7434
4.5	ø 1.14 mm	Blue	P7434.5
5	ø 1.25 mm	Red	P7435
5.5	ø 1.40 mm	Purple	P7435.5
6	ø 1.50 mm	Black	P7436
7	ø 1.75 mm	Green	P7437

### Titanium Temporary Posts Refill

Size			20 pcs
3	ø 0.90 mm	Brown	P7463
4	ø 1.00 mm	Yellow	P7464
4.5	ø 1.14 mm	Blue	P7464.5
5	ø 1.25 mm	Red	P7465
5.5	ø 1.40 mm	Purple	P7465.5
6	ø 1.50 mm	Black	P7466
7	ø 1.75 mm	Green	P7467

### Plastic Lab Burnout Posts Refill

Size			10 pcs	25 pcs	100 pcs
3	ø 0.90 mm	Brown	P7513	P7513B	P7513E
4	ø 1.00 mm	Yellow	P7514	P7514B	P7514E
4.5	ø 1.14 mm	Blue	P7514.5	P7514.5B	P7514.5E
5	ø 1.25 mm	Red	P7515	P7515B	P7515E
5.5	ø 1.40 mm	Purple	P7515.5	P7515.5B	P7515.5E
6	ø 1.50 mm	Black	P7516	P7516B	P7516E
7	ø 1.75 mm	Green	P7517	P7517B	P7517E



## ParaPost® X System Drills



### Drills Refill two-fluted Compatible with all ParaPost X System Posts

Size			3 pcs
3	ø 0.90 mm	Brown	P423
4	ø 1.00 mm	Yellow	P424
4.5	ø 1.14 mm	Blue	P424.5
5	ø 1.25 mm	Red	P425
5.5	ø 1.40 mm	Purple	P425.5
6	ø 1.50 mm	Black	P426
7	ø 1.75 mm	Green	P427
Assorted 3–6 (one of each size)		6 pcs	P42A



## ParaPost® Fiber White / Fiber Lux / Taper Lux

Great alternatives to metal posts for esthetic, metal-free restorations.

**Fiber White:** Chemical Bond between Fiber White and core composite material.

**Fiber Lux:** Translucency enables use of light-cured cements and core materials. Parallel design.

**Taper Lux:** Tapered design for narrow root canals. Translucent for light-cured cements and core materials.



### Fiber White Introductory Kit

One-Office-Visit Technique			PF160
Metal-free Posts			
Posts / Drill	4.5	ø 1.14 mm	3 pcs / 1 pc
Posts / Drill	5	ø 1.25 mm	3 pcs / 1 pc
Posts	5.5	ø 1.40 mm	2 pcs
Posts / Drill	6	ø 1.50 mm	2 pcs / 1 pc
Universal Hand Driver			1 pc
– compatible with ParaPost Drills (P423 to 7)			

### Fiber White Refill One-Office-Visit Technique; Metal-free Posts

Size	5 pcs/pack	10 pcs (pouched per item)
3	PF1613	60018563
4.5	PF1614.5	60018564
5	PF1615	60018565
5.5	PF1615.5	60018566
6	PF1616	60018567



### Fiber Lux Introductory Kit

One-Office-Visit Technique			PF170
Metal-free Posts			
Posts / Drill	3	ø 0.90 mm	2 pcs / 1 pc
Posts / Drill	4	ø 1.00 mm	3 pcs / 1 pc
Posts / Drill	4.5	ø 1.14 mm	3 pcs / 1 pc
Posts / Drill	5	ø 1.25 mm	3 pcs / 1 pc
Posts / Drill	5.5	ø 1.40 mm	2 pcs / 1 pc
Posts / Drill	6	ø 1.50 mm	2 pcs / 1 pc
Universal Hand Driver			1 pc
– compatible with ParaPost® Drills (P423 to 7)			

### Fiber Lux Refill One-Office-Visit Technique; Metal-free Posts

Size	5 pcs/pack	10 pcs (pouched per item)
3	PF1713	60018568
4	PF1714	60018569
4.5	PF1714.5	60018570
5	PF1715	60018571
5.5	PF1715.5	60018572
6	PF1716	60018573



### ParaPost® Taper Lux



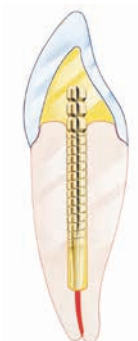
#### Taper Lux Introductory Kit

One-Office-Visit Technique			PF180
Metal-free Posts			
Posts / Taper Lux Drill	4.5	ø 1.14 mm	5 pcs / 1 pc
Posts / Taper Lux Drill	5	ø 1.25 mm	5 pcs / 1 pc
Posts / Taper Lux Drill	5.5	ø 1.40 mm	3 pcs / 1 pc
Posts / Taper Lux Drill	6	ø 1.50 mm	2 pcs / 1 pc
Universal Hand Driver			1 pc
– specially ParaPost Taper Lux Drills are required (P82A)			

#### Taper Lux Refill One-Office-Visit Technique; Metal-free Posts

Size	5 pcs/pack	10 pcs (pouched per item)
4.5	PF1814.5	60018577
5	PF1815	60018578
5.5	PF1815.5	60018579
6	PF1816	60018580

### TENAX®



- Cylindro-conical, passive post system

#### Complete Kit

One-Office-Visit + Casting Technique			TEC1		
Universal Hand Driver			1 pc		
Starter Drill			1 pc		
Drills			Impression/Temporary Posts		
		pcs			pcs
ø 1.1 mm	black	1 pc	ø 1.1 mm	black	10 pcs
ø 1.2 mm	grey	1 pc	ø 1.2 mm	grey	10 pcs
ø 1.3 mm	yellow	1 pc	ø 1.3 mm	yellow	10 pcs
ø 1.4 mm	red	1 pc	ø 1.4 mm	red	10 pcs
ø 1.5 mm	blue	1 pc	ø 1.5 mm	blue	5 pcs
ø 1.6 mm	green	1 pc	ø 1.6 mm	green	5 pcs
Titanium Alloy Posts			Burn-out Posts		
		pcs			pcs
ø 1.1 mm	black	10 pcs	ø 1.1 mm	black	10 pcs
ø 1.2 mm	grey	10 pcs	ø 1.2 mm	grey	10 pcs
ø 1.3 mm	yellow	10 pcs	ø 1.3 mm	yellow	10 pcs
ø 1.4 mm	red	10 pcs	ø 1.4 mm	red	10 pcs
ø 1.5 mm	blue	5 pcs	ø 1.5 mm	blue	5 pcs
ø 1.6 mm	green	5 pcs	ø 1.6 mm	green	5 pcs



### TENAX® Kits



#### Introductory Kit

One-Office-Visit and Casting Technique		TEC2
Titanium Alloy Posts*	20 pcs	
Starter Drill	1 pc	
Impression/Temporary Posts*	20 pcs	
Universal Hand Driver	1 pc	
Plastic Burn-out Posts*	20 pcs	
Drills (one of each size: 1.2 mm, 1.4 mm)	2 pcs	
*10 of each size 1.2, 1.4 mm		



#### Complete Kit

One-Office-Visit + Casting Technique		TEU1			
Universal Hand Driver	1 pc				
Starter Drill	1 pc				
Drills		pcs	Titanium Alloy Posts		pcs
ø 1.1 mm	black	1 pc	ø 1.1 mm	black	10 pcs
ø 1.2 mm	grey	1 pc	ø 1.2 mm	grey	10 pcs
ø 1.3 mm	yellow	1 pc	ø 1.3 mm	yellow	10 pcs
ø 1.4 mm	red	1 pc	ø 1.4 mm	red	10 pcs
ø 1.5 mm	blue	1 pc	ø 1.5 mm	blue	5 pcs
ø 1.6 mm	green	1 pc	ø 1.6 mm	green	5 pcs



#### Introductory Kit

One-Office-Visit Technique		TEU2
Drills (one of each size: 1.2 mm, 1.4 mm)	2 pcs	
Starter Drill	1 pc	
Titanium Alloy Posts*	20 pcs	
Universal Hand Driver	1 pc	
*10 of each size 1.2, 1.4 mm		



**TENAX® Kits**



**Complete Kit**

Casting Technique					TET1
Universal Hand Driver				1 pc	
Starter Drill				1 pc	
Drills		pcs	Impression/Temporary Posts		pcs
ø 1.1 mm	black	1 pc	ø 1.1 mm	black	20 pcs
ø 1.2 mm	grey	1 pc	ø 1.2 mm	grey	20 pcs
ø 1.3 mm	yellow	1 pc	ø 1.3 mm	yellow	20 pcs
ø 1.4 mm	red	1 pc	ø 1.4 mm	red	20 pcs
ø 1.5 mm	blue	1 pc	ø 1.5 mm	blue	10 pcs
ø 1.6 mm	green	1 pc	ø 1.6 mm	green	10 pcs
			Burn-out Posts		pcs
			ø 1.1 mm	black	20 pcs
			ø 1.2 mm	grey	20 pcs
			ø 1.3 mm	yellow	20 pcs
			ø 1.4 mm	red	20 pcs
			ø 1.5 mm	blue	10 pcs
			ø 1.6 mm	green	10 pcs

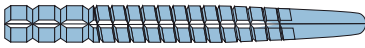
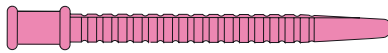


**Starter Drill and Universal Hand Driver**

Starter Drill	1 pc	TEDC1
Universal Hand Driver	1 pc	



### TENAX® Posts



Impression/Temp. Posts 15 pcs		
ø 1.1 mm	black	TEEP11
ø 1.2 mm	grey	TEEP12
ø 1.3 mm	yellow	TEEP13
ø 1.4 mm	red	TEEP14

Plastic Burn-out Posts 30 pcs		
ø 1.1 mm	black	TEL11
ø 1.2 mm	grey	TEL12
ø 1.3 mm	yellow	TEL13

Titanium Alloy Posts 15 pcs		
ø 1.1 mm	black	TET11
ø 1.2 mm	grey	TET12
ø 1.3 mm	yellow	TET13
ø 1.4 mm	red	TET14

Drills 3 pcs		
ø 1.1 mm	black	TEA11
ø 1.2 mm	grey	TEA12
ø 1.3 mm	yellow	TEA13
ø 1.4 mm	red	TEA14
Assorted 6 pcs (one of each size)		TEA1





## TENAX® Fiber Trans



- Great alternative for esthetic, metal-free restorations
- Bonds with dual- and self-cure resin cements and all composite materials

### Fiber Trans Introductory Kit

One-Office-Visit Technique		TFT1
Fiber Trans Posts ø 1.1 mm 5 pcs	Drill ø 1.1 mm	
Fiber Trans Posts ø 1.3 mm 5 pcs	Drill ø 1.3 mm	
Fiber Trans Posts ø 1.5 mm 5 pcs	Drill ø 1.5 mm	
Universal Hand Driver (L590)		

### Fiber Trans Drills Refill

ø 1.1 mm	3 pcs	TED11
ø 1.3 mm	3 pcs	TED13
ø 1.5 mm	3 pcs	TED15

### Fiber Trans Posts Refill

	5 pcs/pack	10 pcs (pouched per item)
ø 1.1 mm	TFT11	60018574
ø 1.3 mm	TFT13	60018575
ø 1.5 mm	TFT15	60018576



## ParaCore®



- Dual-cured composite resin system with integrated bond
- The “25-ml-version” is indicated for post cementation and core build-ups
- The “5-ml-version” can also be used to cement crowns, bridges, inlays and onlays
- Extraordinary strength for long-term restorations

### ParaCore 5 ml Intro Kit

<b>Intro Kit</b>		5885
Syringe White, Dentin, Dentin SLOW + Trans SLOW	4 x 5 ml	
ParaBond Non-Rinse Conditioner + Adhesive A & B	3 x 3 ml	
Mixing Tip brown, short, super fine	1 x 20	
Accessories	1 x	
<hr/>		
<b>Intro Kit SLOW</b>		60013753
Syringe Dentin SLOW + Trans SLOW	4 x 5 ml	
ParaBond Non-Rinse Conditioner + Adhesive A & B	3 x 3 ml	
Mixing Tip brown, short, super fine	1 x 20	
Accessories	1 x	

### ParaCore 5 ml Refills

ParaCore 5 ml Syringe White	2 x 5 ml	5886
Mixing Tip brown, short, super fine	1 x 20	
<hr/>		
ParaCore 5 ml Syringe Dentin	2 x 5 ml	5887
Mixing Tip brown, short, super fine	1 x 20	
<hr/>		
ParaCore 5 ml Syringe Dentin SLOW	2 x 5 ml	60011391
Mixing Tip brown, short, super fine	1 x 20	
<hr/>		
ParaCore 5 ml Syringe Trans SLOW	2 x 5 ml	60011392
Mixing Tip brown, short, super fine	1 x 20	

### ParaCore Single 25 ml

Content		Dentin	White
<b>Intro Kit</b>		1500	1502
Dispenser	1 x		
Cartridge	1 x 25 ml		
ParaBond Non-Rinse Conditioner + Adhesive A & B	3 x 3 ml		
Mixing Tip yellow / Oral Tips	2 x 20		
Accessories	1 x		
<hr/>			
<b>Standard Kit</b>		1501	1503
Cartridge	1 x 25 ml		
Mixing Tip yellow / Oral Tips	2 x 20		
ParaBond Non-Rinse Conditioner + Adhesive A & B	3 x 3 ml		
Accessories	1 x		
<hr/>			
<b>Automix Refill pack</b>		5853	5854
Cartridge	1 x 25 ml		
Mixing Tip yellow / Oral Tips	2 x 20		



## Locations

**CH Coltène/Whaledent AG**

Feldwiesenstrasse 20  
9450 Altstätten / Switzerland  
T +41 71 757 53 00  
F +41 71 757 53 01  
info.ch@coltene.com

**CN Coltène/Whaledent China Trading Co. Ltd.**

Rm. 1103/1104, Bldg. B2, Wu Dong Plaza  
#9 Chegongzhuang Street, West District  
Beijing 100044 / P.R. China  
T +86 10 6212 3251  
F +86 10 6212 3252  
info.cn@coltene.com

**IT Coltène Italia S.r.l.**

c/o Polo Tecnologico della Brianza  
Via Alessandro Volta, 94 - Cond. Bianchi  
20832 Desio (MB) / Italy  
T +39 0362 62 67 32  
F +39 0362 63 25 80  
info.it@coltene.com

**DE Coltène/Whaledent GmbH + Co. KG**

Raiffeisenstraße 30  
89129 Langenau / Germany  
T +49 7345 805 0  
F +49 7345 805 201  
info.de@coltene.com

**FR Coltène/Whaledent S.a.r.l.**

Synergie Park  
3 avenue Louis Néel  
59260 Lezennes / France  
T +33 320 64 64 00  
F +33 320 64 64 03  
info.fr@coltene.com

**UK Coltène/Whaledent Ltd.**

The President Suite  
Kendal House, Burgess Hill  
Victoria Way  
West Sussex, RH15 9NF / UK  
T +44 1444 235486  
F +44 1444 870640  
info.uk@coltene.com

**US Coltène/Whaledent Inc.**

235 Ascot Parkway  
Cuyahoga Falls, Ohio 44223 / USA  
T +1 330 916 8800  
F +1 330 916 7077  
info.us@coltene.com

**IN Coltène/Whaledent Private Ltd.**

106/107, Hallmark, Vasant Oscar  
L.B.S Marg, Mulund West  
Mumbai 400080, Maharashtra / India  
T +91 22 25923626  
F +91 22 25623165  
info.in@coltene.com

**BR Vigodent SA Indústria e Comércio**

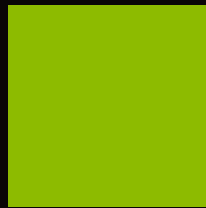
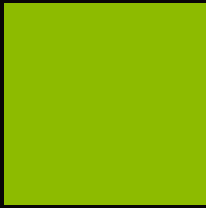
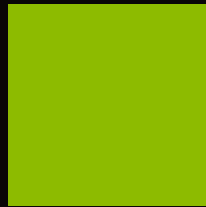
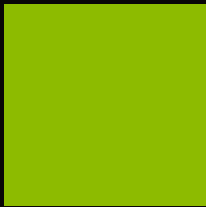
Rua Pesqueira 26 Bonsucesso  
Rio de Janeiro CEP 21041-150 / Brazil  
T +5521 3865 5600  
F +5521 2280 8411  
sac@vigodent.com.br

**ES Coltène Iberia S.L.U.**

c/Doctor Fleming, 3 - Bajo A  
28220 Majadahonda, Madrid / Spain  
T +34 91 63 86 492  
F +34 91 63 86 279  
info.ib@coltene.com

**JP Coltène Japan LLC**

2-2-28 2nd Floor, Nishikicho  
190-0022 Tachikawa Tokyo / Japan  
T +81 42 595 6945  
F +81 42 595 6946  
info.jp@coltene.com



© 2017 Coltène/Whaledent AG – [www.coltene.com](http://www.coltene.com)

